

INFORMATION BROCHURE

2015



DDCE
Education for all

DIRECTORATE OF DISTANCE & CONTINUING EDUCATION

UTKAL UNIVERSITY: BHUBANESWAR-751007(Odisha)

Email : director@ddceutkal.ac.in

www.ddceutkal.ac.in





Our Chancellor



HIS EXCELLENCY SHRI S.C. JAMIR
HON'BLE GOVERNOR OF ODISHA



Our Vice Chancellor



PROF. ASOKA KUMAR DAS



CONTENTS

Foreword

Logo	01
Vision	02
Mission	02
Objectives	03
The Legend	04
Major Activities	07
Feedback	10
Student Intake	11
Result Analysis	12
Team DDCE	13
The Core Faculty	15
Other Faculty	18
Courses Offered:	19
♦ Admission Eligibility	21
Selection Process of Admission and Schedule	22
♦ Selection Process	23
♦ Documents Required for Admission	23
Fees Structure	24
Curriculum/Courses of Study	25
MBA (P. 25), IMBA & BBA (P. 27), PG Diploma in Management (P. 30), MBA Evening (P.32), MA in Economics (P. 34), MA in Education (P. 35), MA in English (P. 36), MA in Hindi (P. 37), MA in History (P. 38), MA in Odiya (P. 39), MA in Political Science (P. 40), MA in Public Administration (P. 41), MA in Sanskrit (P. 42), MA in Sociology (P. 43), MA in Social Work (P. 44), M.Com (P. 45)	
Regulation	46
BA / B.Com. (P. 46), MBA/PG Diploma in Management (P. 56), IMBA/BBA (P. 60), MCA (P. 62), MA, M.Com, MSW (P. 66)	
Exam System	69
Academic Calendar	72
Contact Classes	73
Examination Schedule	74
General & Examination Instructions	75
Holiday List 2015	78
Tentative Holiday List for 2016	79





DDCE
Education for all

FOREWORD

The Directorate of Distance & Continuing Education, originally established as the University Evening College way back in 1962 has travelled a long way in the last 53 years. Nearly ninety thousand students have passed through the portals of this great temple of learning. We may not have numerous great tales of outstanding academic achievements but we have great tales of success in life, of recovering lost opportunities, tremendous satisfaction in life, turning points in career and those who feel that without us they would not be where they are today. There are also flashes when our students figure in best ten in their honours subjects. In 2014 we have as many as ten students within top ten of Honours merit list of Education, Sanskrit, English and Public Administration, Accounting and Management Honours. Team DDCE feels proud and vindicated with the success stories of its students. Our perspective students must be free from despair and negative attitude. They must be enthusiastic, full of energy and confident of their future.

We are miles away from our vision and mission. Education for all and Any time - Anywhere - Any one Education are not mere slogans for us yet we alone cannot achieve a fragment of our goal without the support of all our stake holders- the civil society, government, our own University- teachers, administration and other facilitators and above all our students. We rededicate ourselves to our vision and mission.

The year 2014-15 has been a great year. His Excellency Shri S.C. Jamir, Hon'ble Governor of Odisha and our Chancellor visited DDCE for the first time in November 2013. Our Vice Chancellor Prof. Dr. Asoka Kumar Das has also visited DDCE number of times in 2014-15 and had in depth sessions with the faculty and inquired into the state of art IT facilities. DDCE now has a new gate and a separate room for students to have food in breaks between classes. Course materials for nearly all the courses being offered are available. A batch for Evening MBA Course has been added. DDCE has also initiated new steps for garden Development. Online Form fill up has been introduced. DDCE now have access to Internet through Radio Links of STPI, besides the BSNL lease line.

DDCE has strengthened its infrastructure with addition of 4 class rooms, 4 Halls and a new Library. We have introduced Choice Based Credit Semester System for our P.G. Courses from 2013-14. Publication of result has been streamlined and timely publication of results has been ensured. Our IT

application has advanced with online Admit Card for all examinations and online Mark Sheet for most examinations. DDCE IT Team published the BA, B.SC and B.Com result of Utkal University (including our own) on 28th April 2014. This is a record for the University.

We welcome the 2015-16 batch to our family. We urge upon our students to make commitments to utilize their time, body and mind for pursuit of knowledge. They must go beyond the print course material and Personal Contact Programme. They must increasingly use online open sources of knowledge, teach each other and interact more with faculty members including outsiders. They must overcome difficulties and limitation and shine. Let them remember- Satyam Param Dhimahee, 'meditate on the highest truth' the aphorism Utkal University has adopted in its logo and practice the same. Let our students shine as lamps and light thousand others lamps.

Team DDCE





Education for all
DDCE

The logo of the University has a book and a lamp at the centre signifying pursuit of knowledge and kindling the light of knowledge. Be a lamp to yourself and others, a single lamp can lit thousand other lamps, are part of our traditional wisdom. The stalk of grain signifies Agriculture- the first sign of culture. Agriculture marks the evolution from food gathering to food production and birth of civilization. The mountain symbolizes the forest, natural flora and fauna, minerals and industry of Odisha. The ramparts of the fort signify Odisha's past military achievements. The ship signifies Odisha's rich maritime heritage. ***Satyam Param Dheemahi***, the aphorism, adopted by our University means '**Meditate on the Highest Truth**'. DDCE, Utkal University uses the University logo and has adopted "**Education for all**" as its motto.

OUR VISION

- To provide Higher Education for Anyone, Anytime and Anywhere
- To grow as a quality educational institution Meeting National and International goals of Higher Education

OUR MISSION

- To Increase Access
- To Provide Quality Education
- To offer Innovative Need Based Courses
- To Improve Employability & Professional Competence
- To offer Online Interactive Education

OBJECTIVES

- To provide opportunity to those who are unable to pursue higher education in the conventional mode of teaching.
- To provide equal opportunity for higher education through distance mode.
- To provide opportunity to adult and working population to upgrade their knowledge, skill and qualifications and to advance their career perspective.
- To provide flexibility in enrolment in terms of age, choice of courses, methods of learning and appearance at examinations etc.
- To complement and supplement the Higher education system of the state.
- To promote research and creation, dispersion and advancement of knowledge.
- To enable learners to overcome barriers: geographical, socio-economic and gender etc.
- To promote continuing education.
- To promote the cause of quality manpower under the faculty of Humanities and Social Sciences, Management and Business Studies and IT, Computer Science and Application.

THE LEGEND (1962-2015)

DIRECTORATE OF DISTANCE AND CONTINUING EDUCATION, UTKAL UNIVERSITY

Utkal University

The Utkal University founded on 27.11.1943 is the mother University of Odisha. Pandit Nilakantha Dash, Maharaja Krushna Chandra Gajapati and Pandit Godavarish Mishra, amongst other doyens of modern Orissa, played a leading role in the establishment of the University. On 27th of Nov 1943, the Utkal University started functioning at Ravenshaw College (now University), Cuttack. Dr. Rajendra Prasad, the first President of India, laid down the foundation of the present 400 acre sprawling campus on 1st January 1958. The University thereafter was singularly honoured when a great educationist Dr. Sarvapalli Radhakrishnan, the second President of India inaugurated the present campus at Vani Vihar on 2nd January 1963. It was originally an affiliating and examining body only.

A number of Post-Graduate Departments and other centers were established in the University Campus. There are more than three hundred general affiliated colleges under the University. The University has thirteen Autonomous Colleges under its jurisdiction. It has 27 constituent Post-Graduate Departments, 2 Constituent Law Colleges, a Directorate of Distance & Continuing Education and a number of centers like Population Studies, School of Women's Studies, Ambedkar Study and Social Exclusion and Inclusive Policy Study , an Academic Staff College, a Pre-School and a High School etc. The University offers number of Self Financing Courses.

Utkal University is recognized by the UGC. It is a member of the Indian Association of Universities and Commonwealth Association of Universities.

University Evening College

The Directorate of Distance and Continuing Education (DDCE) a constituent directorate of the Utkal University had a modest beginning as the University Evening College in October, 1962 with an objective to provide continuing education. The College offered I.A. and B.A. programme. It operated in the premises of BJB College, an affiliated college, under Utkal University. Shri Ram Chandra Rajguru, Shri Damodar Mishra , Shri Baidyanath Mishra and Shri Shiv Charan Panda were the Principals. Shri Purna Chandra Pattanaik, Shri Ashutosh Pattanaik, Sri Khitish Chandra Dey and Shri K.P.A. Pillai served as Vice Principals.

Directorate of Correspondence Courses

On 27th November, 1974, The University Evening College was converted into Directorate of Correspondence Courses under the auspices of Shri Gyan Chand, IAS, the Administrator. Dr. Ram Shankar Rath, took over as the OSD of DCC and served as its first Director from 29.10.1975 to 31.05.1993. The DCC offered I.A and B.A. Programmes from July 1975. B.Com was subsequently added and B. Ed was offered for a short duration. The DCC operated from the Administrative Block of the Utkal University. It was shifted to its present campus in 1987. The first floor of the DCC building was inaugurated on 1 January, 1995 by Prof. S.N. Acharya, Vice Chancellor. Shri A.N. Mishra served as the Director in-charge from 10.06.1993 to 24.11.1995. Prof. S.P. Pani took over as the Director from 25.11.1995.

Directorate of Distance and Continuing Education

As per the revised UGC guidelines for Open and Distance Learning, the DCC was converted to Directorate of Distance and Continuing Education w.e.f. 15.10.1996. Prof. G.K. Das, Vice Chancellor, Prof. Ajit K. Mohanty, Prof. K.B. Pattanaik, Prof. S.P. Pani and Shri Alekh Chandra Mishra, A.O., DDCE played an active role in giving new directions to the rechristened institution.

DDCE introduced several new programmes in succession besides BA, and B.Com (Pass and Hons.). M.A. in Odia and History in 1996, Political Science and Sanskrit in 1997, Public Administration, English and Education in 2000, Economics, M.Com and MSW in 2011 were introduced. M.A. Sociology was offered from 2000 to 2005 and has been revived since 2013. DDCE introduced courses in Computer Science in 1998 under the leadership of Shri A.K. Tripathy, IAS, and the Vice Chancellor. Subsequently, MCA in regular mode as an evening course was introduced in 1999 under the tutelage of Prof. G.N. Das, Vice Chancellor. DDCE offered B. Sc (ITM), BITM, and Diploma in Digital Art, BCA, DCA and PGDCA etc. for a short duration. DDCE introduced a Management Programme in 2000. At present, IMBA, MBA and PG Diplomas in Management (HR, MM, FM, POM, and TTM and DNM) are being offered under distance mode. From 2014-15 session DDCE is offering MBA Evening Program for working executives in face to face Regular Mode. Prof. R.K. Jena, the first Coordinator, Prof. S.K. Das, Prof. B.R. Mohanty, Prof. S. Sahoo, Prof. P.K. Sahoo, Prof. R.C. Mohapatra and others assisted DDCE. Post Graduate Diploma in Banking and Insurance Management (In Regular Face to Face Mode) in collaboration with ICICI Bank was introduced in 2007 at the initiative of Prof. L.N. Mishra, Vice Chancellor, Shri A.K. Tripathy IAS, Commissioner–cum–Secretary, Govt. of Odisha, Dept. of Higher Education, Shri K.V. Kamath, Chairman and Shri Paul Delima, DGM, ICICI Bank and Prof. S.P. Pani. Certificate and Diploma Courses in NGO Management in Odia

medium were introduced 2010 in collaboration with UNAIDS, New Delhi. Prof. B.K. Rath, Vice Chancellor, Ms. Sarita Yadav, UNAIDS and Prof. S.P. Pani provided the necessary leadership. This course stands suspended from 2014. The Soft Skill Development Cell was established in 2007. MSW, MCOM and M.A. Economics were introduced in 2011. M.A. in Hindi was introduced in 2013. The Internal Quality Assurance Cell, Utkal University was functioning in DDCE from 2011 to 2014. DDCE had also set up the Centre for Women's Studies in 1997. Prof. Sukhadeo Throat, Chairman, UGC inaugurated the Centre for Social Exclusion and Inclusive Policy Study established by DDCE on 23.02.2008. Both are now independent centers and stands shifted out of DDCE.

The PCP Block was added in 1997. An Extension Counter of the Syndicate Bank was opened on 16.09.1997 and was upgraded to a Branch on 10.11.2005. The foundation stone for the Silver Jubilee Building was laid by Prof. S.P. Pani on 14 July 1999. The Silver Jubilee Building stands on the place where Shri Rajendra Prasad, the first President of India, had laid the foundation stone of Utkal University on 1 January 1958. The office establishment and the library have been functioning in this building since January, 2005. Prof. P.K. Sahoo, Vice Chancellor, along with Prof. S.P. Pani, Director and Team DDCE laid the cornerstone of the 2nd Floor of the Silver Jubilee Building and Old Administrative Block on 30.06.2012. The second floor of the Silver Jubilee Building was inaugurated by Prof. P.K. Sahoo, Vice Chancellor, Prof. S.P. Pani, Director and Team DDCE on 13.05.2013. This floor has been now named as "TATHAGATA BHABAN". An image of Lord Buddha in Dharma Chakra Prabartan Mudra has been placed in the corridor. The library hall named after Bharata Ratna Ambedkar is located in the Tathagata Bhavan. A new complex of halls named after Indian noble laureates Mother Terrasa, Amartya Sen, C.V. Raman and R.N. Tagore now stands at the second floor of the old building. Those halls along with Ambedkar Hall were inaugurated on 27th November 2013 by His Excellency S.C. Jamir Hon'ble Governor of Odisha and our Chancellor.

Computerization was initiated in 1994. The first computer was procured in 1996. Today we have 3 computer labs, 100+ Computers, 5+ Servers, +5 Printers, Lease and Radio Link Internet Connectivity, and Structured LAN and have computerized admission, accounts and examination processes, initiated modest Online Learning for PGDBIM and operate the Utkal University Examination Management System.

Prof. A. Mishra, Prof. P.C. Tripathy, Prof. R.C. Mohapatra, Prof. B.C. Guru, Prof. P.K. Sahoo, Prof. H.K. Swain and Prof. R.K. Bal served as In-charge Directors. Presently the Utkal University is headed by His Excellency Shri S.C. Jamir, Hon'ble Governor of Odisha as the Chancellor. Prof. Asoka Kumar Das, is our Vice Chancellor.

MAJOR ACTIVITIES CONDUCTED AT DDCE (2008-2015)

Year	Date	Event	Participants	Activity Conducted
2015	27 Jan. 2015 to 20 Feb.2015	Winter Orientation Refresher Course for College Teachers	College and University Teachers	UGC Sponsored ASC Program.
2014	19 th July 2014	Training Program on Computerization of Zonal Valuation of +3 first year regular Exam 2014.	Representatives of Central Valuation Zones	UUEMs Training Program
	17 th May 2014	Training Program on Computerization of Zonal Valuation of +3 2 nd year regular/ back Exam 2014.	Representatives of Central Valuation Zones	UUEMs Training Program
	14 th March 2014	IT Training for Central Valuation Zone Officials	Representatives of central valuation Zones	IT Training
	28 th Feb to 27 th March 2014	Orientation course	College and University Teachers	Orientation course on teaching learning process
2013	27 Nov 2013	Chancellor's Visit	Vice Chancellor & Registrar and DDCE Students and staff	Inauguration of Nobel Laureate Halls and Library Hall
	6 th Oct to 9 th Oct 2013	Training program for UUEMS	All principals from affiliated colleges	Training Program on Exam Management
	28 th Oct 2013	Workshop on Question Preparation	Subject experts	Preparation of question for all P.G. courses
	5 th Aug to 31 st Aug 2013	Orientation course	University and college teachers	UGC sponsored orientation course
	31 st July to 21 st Aug 2013	Refresher course	College and University teachers	UGC sponsored refresher course on social science
	12 th July to 18 th July 2013	Workshop	Research scholars from English and Odia Depts	Traning on Translation studies
	7 th July 2013	Invited Lecture by Prof. P. K. Das., EFLU, Hyderabad	Research personnel	Talk on M. Foucault
	6 th July -2013	Short term course For scholars	Research personnel	UGC sponsored short term course on meta analysis by Prof. Damodar Suar from IIT KGP.
	20 th June to 10 th July 2013	Summer refresher/orientation program	Teachers from Government Colleges and Universities	UGC sponsored teachers training programe
	9 th May, 2013	Training Programme	Principals and Data Entry Operators	Training Programme for Principals and Data Entry Operators of colleges on Utkal University Examination Management System
	16 th April,2013	Workshop	Subject Experts	Workshop on restructuring syllabus of Environmental Science and Science in Everyday Life for UG Courses

	2013	Orientation Programme	College Teachers	Conducted in collaboration with UGC Academic Staff College, Utkal University. Young College and University teachers were trained. Participants drawn from Govt. Colleges, Rashtriya Sanskrit Santhan, OUAT and other Institutes both from inside and outside the state.
	13-14 March, 2013	Workshop	Authors	Authors were trained on preparation of course ware in Self Learning Pattern
	4-31 March, February, 2013	Induction Training Programme	Academic Consultants of DDCE	The Academic Consultants were trained on various aspects of Distance Education
	29 th January to 18 th February, 2013	Refresher Course in Education	College Teachers of Education	Conducted in collaboration with UGC Academic Staff College, Utkal University. Teachers of Education drawn from general colleges, Teacher Education Colleges and Universities were trained.
2013	16 th Dec. 2012	Workshop	Subject Experts of Hindi, Computer Sc. And Commerce.	Development of Syllabus of M.A in Hindi, P.G.DCA, B.Com under Choice based Credit System.
	17 th Nov. 2012	Workshop	Subject Experts of Home Sc.	Development of Syllabus of Home Sc. Hons. & P.G under Choice based Credit System.
	3 rd Nov. 2012	Workshop	Subject Experts of Education	Development of Syllabus of Education Hons. & P.G under Choice based Credit System.
	21 st Sept. 2012	Workshop	Subject Experts of Hindi.	Development of Syllabus of Hindi under Choice based Credit System.
	15 th & 16 th Sept. 2012	Workshop	University Teachers.	Choice based Credit System.
	4 th Aug. 2012	UGC Regional Seminar	Registrars of Universities of Eastern India.	UGC Regional Seminar on Action Plan on Reforms of Affiliating System.
	25 th June-14 th July 2012	SUMMER COURSE	College & Universities Teachers.	UGC sponsored Summer course on Social Sciences: Issues & Challenges for 21 st Century.
	23 rd April.-30 th April 2012	Workshop	Subject Experts	Restructuring Curriculum for Courses Offered By DDCE.
	17 th -20 th of March 2012	Workshop	Research Scholars and College Teachers	Theories of Literature (English).
			Research Scholars and College Teachers	Translation Studies (Odia to English)
			Research Scholars and College Teachers	Research Methodology for Commerce & Management.
	4 th Jan -9 th of Feb. 2012	Induction Training Program	Postal Assistants	Induction Training Program for newly recruited Postal Assistants conducted by P&T Dept., Govt. of India..

2011	19 th Dec. -22 nd Dec. 2011	Training Program	Data Entry Operators of Affiliated Colleges.	Training Program of DEO of Colleges under Utkal University Examination Management System.
	3 rd Dec. 2011	Workshop	Subject Experts	Restructuring Academic Programs of DDCE
	26 th & 27 th March 2011.	National Seminar	University Teachers & Research Scholars.	Social Exclusion and Social Justice in India
	12 th Feb. & 13 th Feb. 2011	National Conference	University Teachers & Research Scholars.	National Conference on ODL: Issues of Learning, Governance and Quality Assurance.
2010	15 th Feb.- 21 st Feb. 2010	National Level Integration Camp	NSS Student Volunteers & Teacher Co-ordinators.	National Level Integration Camp rganized by NSS Bureau, Utkal Unievrsity.
	4 th Jan.-06 th Jan 2010	ICLAS National Conference	Teachers & research Scholars.	The Indian Association For Commonwealth Literature and Language Studies.
2009	6 th Dec. 2009	Regional Session of Orissa History Congress	University College Teachers & Research Scholars.	Orissa History Congress
	14 th & 15 th Sept. 2009	Workshop	Language Experts & Teachers.	Author's & Language editor's workshop for preparing Course ware of NGO Management Program.
	3 rd March- 7 th March. 2009	Workshop	University & College Teachers.	Preparation of "Question Bank" for Management and Commerce Stream
	18 th & 19 th Feb. 2009	Workshop	Subject Experts.	Preparation of Distance Education Study Materials for Arts & Commerce Jointly Held by Council of Higher Education Odisha & DDCE.
2008	12 th May-27 th May 2008	Training Program	Teachers.	Project Genesis 2 nd phase training Program at Infosys.
	27 th March-29 th March 2008	Workshop	Doctoral & M.phil Scholars	Research Methodology for Humanities.
	10 th March - 11 th March 2008	Faculty Development Programme	Subject Experts	"The ICICI e-Learning Banking Simulation Modules"
	10 th March - 16 th March 2008	Executive Training Program	Executives from Postal Department.	Training Program in Marketing & Network Software for Executives of India Post
	30 th & 31 st Jan.2008	Campus Recruitment Drive	Students	Campus Recruitment Drive For Infosys.
	20 th Jan.2008	State level Seminar	Public/ Teachers/Students.	On Gandhian Philosophy rganized by DDCE on behalf of Govt. of Odisha

FEED BACK

**Student feedback is obtained after each Personal Contact Programme.
Following table reflects the result**

SL_NO.		Subject	Punctuality (Avg. in %)	Knowledge of the Teacher	Course Coverage	Quality of the Teacher
1	2014-15	MBA	96.34	98.34	94.23	95.63
2		IMBA	95.45	96.65	95.86	96.34
3		All P.G. Diploma	94.35	95.62	96.52	94.52
4		N.G.O Management	100	97.53	95.66	89.75
5		All M.A	96.05	93.18	89.32	95.45
6		B.A/B.Com	94.52	89.68	97.56	89.53

SL_NO.	Year	Subject	Punctuality (Avg. in %)	Content Knowledge (Avg. in %)	Course Coverage (Avg. in %)	Clarity of Expression & Language (Avg. in %)	Teaching Method (Avg. in %)	interaction (Avg. in %)	Use of teaching aids (Avg. in %)
1	2013-14	MBA	95.00	97.23	93.00	90.00	91.40	89.88	88.41
2		IMBA	91.55	93.23	88.55	90.32	87.11	89.33	89.14
3		All P.G. Diploma	91.27	95.23	85.73	89.12	88.12	89.67	85.00
4		N.G.O Management	100.00	100.00	96.56	100.00	100.00	100.00	100.00
5		M.A	94.39	91.20	91.37	91.99	91.14	91.52	91.45
6		B.A/B.Com	93.45	92.11	94.23	94.57	94.23	98.05	92.36

SL_NO.	Year	Subject	Punctuality (Avg. in %)	Content Knowledge (Avg. in %)	Course Coverage (Avg. in %)	Clarity of Expression & Language (Avg. in %)	Teaching Method (Avg. in %)	interaction (Avg. in %)	Use of teaching aids (Avg. in %)
1	2012-13	MBA	94.17	93.78	89.36	92.02	91.40	89.88	88.41
2		IMBA	90.06	89.29	82.53	90.32	87.11	88.90	89.14
3		All P.G. Diploma	87.82	93.98	85.73	88.62	85.10	89.67	84.89
4		N.G.O Management	96.73	100.00	96.56	100.00	100.00	100.00	100.00
5		M.A	94.06	93.30	89.92	91.49	92.06	91.53	88.42
6		B.A/B.Com	94.47	93.20	95.38	94.57	94.23	94.09	94.67

STUDENT INTAKE

SL.NO.	YEAR	INTAKE	TOTAL STUDENT STRENGTH
1	1975-1976	600	600
2	1976-1977	2489	3089
3	1977-1978	606	2420
4	1978-1979	3262	3868
5	1979-1980	520	3782
6	1981-1982	369	369
7	1982-1983	203	203
8	1983-1984	1376	1376
9	1986-1987	1376	1376
10	1987-1988	2131	3507
11	1988-1989	2674	5180
12	1989-1990	3086	5885
13	1990-1991	3086	6877
14	1991-1992	3455	8172
15	1992-1993	3054	8759
16	1993-1994	2696	8860
17	1994-1995	2365	8114
18	1995-1996	1475	6536
19	1996-1997	2297	6137
20	1997-1998	2556	6328
21	1998-1999	2111	6440
22	1999-2000	2261	6375
23	2000-2001	3551	9556
24	2001-2002	2812	10115
25	2002-2003	2390	9683
26	2003-2004	2023	5614
27	2004-2005	2455	5988
28	2005-2006	2386	6113
29	2006-2007	2487	5895
30	2007-2008	2752	5890
31	2008-2009	2854	6175
32	2009-2010	3427	6941
33	2010-2011	4111	7797
34	2011-2012	4446	8364
35	2012-2013	3762	8071
36	2013-2014	3806	9334
37	2014-2015	4067	10,076

UNIVERSITY EXAM RESULT ANALYSIS 2013-2014

COURSE	APPEARED	1ST DIVISION	2nd DIVISION	3rd DIVISION	TOTAL PASSED	% OF PASS
MA ECONOMICS	129	7	25	28	60	47
MA EDUCATION	248	45	106	10	161	65
MA ENGLISH	141	7	76	21	104	74
MA HISTORY	64	1	28	8	37	58
MA ODIA	265	41	117	27	185	70
MA POLITICAL SCIENCE	150	1	87	37	125	83
MA PUBLIC ADMINISTRATION	69		22	10	32	46
MA SANSKRIT	143	3	35	23	61	43
MASTER IN SOCIAL WORK	75	26	38		64	85
M. COM	233	28	94	32	154	66
Average pass percentage: 65%						

UG COURSE							
	APPEARED	1ST DIVISION WITH Distinction	1ST DIVISION	2nd DIVISION WITH Distinction	2nd DIVISION	GENERAL WITHOUT HONOURS	% OF PASS
BA HONS	781	301	134	86	133	9	84
BCOM HONS	188		3	7	96	21	56
		GENERAL WITH Distinction	GENERAL	% OF PASS			
BA GENERAL	516	107	286	76			
BCOM GENERAL	12		4	33			
Average pass percentage: 87%							
		GRADE					
COURSE	APPEARED	O	E	A	B	C	D
MBA	289		6	30	77	38	3
IMBA	17			3	6		
PG. DIPLOMAS	26	1		11	8		
Average pass percentage: 52%							

TEAM DDCE

(Not in order of position or seniority)

Prof.-Cum-Director

Prof. S.P. Pani

Lecturers:

Dr. M.R. Behera (Odia)

Dr. P.P. Panigrahi (English)

Dr. S.K. Acharya (Business Administration),

Academic Consultants:

Mr. S.C. Mishra (Computer Science)

Ms. R.R. Das (Business Administration)

Mr. Nikunja Ranjan Dash (Education)

Mr. Giridhari Sahoo (Commerce)

Mr. Jayanta Kumar Dash (Pol. Science)

Ms. Renuka Kumar (Social work)

Ms. Pragyan Paramita (Hindi)

Mr. Madhab Chandra Sethi (History)

Library

Ms. Mitali Sahoo. Librarian

Software Team

Mr. Surya Narayan Rath(Consultant)

Mr. Aswini Kumar Gauda (Programmer)

The Office

Sri Ganeswar Naik, S.O. Accounts

Sri Jogendranath Das ,S.O.Examination

Sri. Dharendra Kumar Ray, S.O. Academics

Sri. Brundaban Mohapatra, Director's Estt.

Sri Asisa Kumar Mishra, Jr. Executive-Examination

Ms. Litun Pradhan,Jr. Executive – Admin.

Smt. Meerashree Das, Sr. Asst., Accounts

Sri Bhagyadhar Prusty .Jr. Asst., Examination

Mrs. Suprita Mahana ,Jr. Asst., Dispatch
Mrs Tunibala Pati, Jr. Typist, Accounts
Ms. Sabita Mallik , Jr.Asst. Cum Data Entry Operator, Examinations
Mrs. Diptimayee Dalai, Jr.Asst. Cum Data Entry Operator, Accounts
Mrs. Laxmipriya Pani, Jr.Asst. Cum Data Entry Operator, Director's Establishment
Mrs. Manjulata Rout, Jr.Asst. Cum Data Entry Operator, Examinations
Sri Sitaram Deheri, Jr.Asst.- Lesson Store
Sri Pradipta Kumar Swain, Jr.Asst- Dispatch
Sri Purnananda Pradhan, Jr. Asst- Student Help Desk
Sri Chitta Ranjan Naik ,Recorder
Ms. Swapna Manjari Dash, Data Entry Operator, E-Receipt
Ms. Banaja Paikaray, Data Entry Operator, Examinations
Mr. Deepak Kumar Mohapatra, Data Entry Operator, Examinations
Ms. Soumaya Satyapriya Debata, Data Entry Operator, Examinations

The Supportive Staff

Sri Bhaskar Chandra Chand, Academics
Smt. Kanti Paikaray ,Management Program
Sri Damodar Barik , Driver
Sri Bairagi Charan Singh, Driver
Sri Banambar Behera ,Accounts
Sri Braja Mohan Gochhayat, Lesson Dispatch, General course.
Sri Sridhar Naik, Library
Sri Landa Naik, Dispatch
Sri Chitta Ranjan Nayak ,Lesson Dispatch Management Course
Sri Rabindra Jena, Gardener

THE CORE FACULTY

Prof. S. P. Pani, Director

Email-susmit_1957@yahoo.co.in

Prof. S.P. Pani, b 1957, Director, Distance & Continuing Education, Utkal University was educated at DM School, Bhubaneswar, BJB College & P.G. Dept. of History, Utkal University, Bhubaneswar. He was a Research Fellow at IIT, Madras and UGC JRF at P.G. Dept. of History, Utkal University.

Prof. Pani has served as a faculty member of P.G. Dept. of History, Utkal University and Sambalpur University, Ravenshaw College, Cuttack and V.Deb College, Jeypore. He also served Regional Institute of Education, Bhubaneswar.

He has wide administrative experience since 1992. He held numerous positions, , Director, College Development Council and Director, IQAC , Utkal University. Registrar Central University of Orissa, Koraput and Principal, Aeronautics College, Sunabeda under HAL , Koraput. Recently as a member of the NAAC Peer Team he has visited , Jadavpur University of Calcutta and numerous College in Karnatak, Maharastra and West Bengal. Earlier he had visited NEHU, Mizoram University , Gorakhpur University, Bangalore University and numerous other Colleges.

Prof. Pani regularly delivers lectures in various colleges and Universities. He has recently delivered the following Lectures.

2015-Ramayana Text & Discourse at Kendriya Lalita Kala Academy , Regional Centre, Bhubaneswar.

2015-Ramayana-Different Version at P.G. College Sector-11, Chandigarh

2015-Kothari Commission to Rusa at Punjab University , Chandigarh

2015-Freedom Struggle of India Series at School of Leadership KIIT University.

2015-Ramayana Characterization P.G. Dept. of English Utkal University

2015 Metaphysical Foundation of Western Civilization-P.G. Dept. of English, Utkal University.

2015-Role of state in Higher Education & Privatisation-UGC Seminar at Tulsi Women's College, Kendrapara.

2014-Ram Reddy Memorial Lecture on Open Distance Learning at Jammu University

2014-NAAC Accreditation & Quality Concerns at Burdwan University .

2014- Concept of History – M.K.C.G. College, Paralakhemundi

2014- Role of Mahatma Gandhi in India's Struggle for Freedom at Laxmipur College, Koraput

2014- Leadership Development at Aeronautics College, HAL, Koraput and numerous others.

He has done pioneering research work in intellectual history of Modern India. He has published more than 25 Research papers and 12 books. His major publications include: *Sri Aurobindo: Life and Thought*, *Gandhi, Aurobindo and Radhakrishnan on Bhagavadgita*(Co-author) , *Vivekananda, Aurobindo and Gandhi on Education*(Co-author), *Gandhi : The Forgotten*

Mahatma (Ed.), Essay on Contemporary Gender Issues(Ed.) and Word, Image, Music: Post Colonial Readings in the Age of New Media(Ed.). He has successfully guided 12 numbers of Ph.D. and D.Litt. scholars.

Dr. Mamata Rani Behera, Asst. Professor, Odia (M.A, M.Phil, Ph.D)

Email- mamatab712@gmail.com

Dr. Mamata Rani Behera is a Faculty in the Department of Odia, DDCE, and Utkal University. She has educated at Sailabala Womens College and P.G. Department of Odia, Utkal University. She has qualified UGC NET, JRF in the year 1993. She obtained her M.Phil and Ph.D Degree in the area of Modern Odia Poetry from Utkal University in the year 2000. She has published number of research articles in different Journals. She has also authored four Books on Criticism, Poetry and Short Stories.

Dr. Prajna Paramita Panigrahi, Asst. Professor, English (M.A., M.Phil. Ph.D)

Email-prajna.p.panigrahi@gmail.com

Dr. P. P. Panigrahi is a Lecturer in English Department of DDCE, Utkal University. She was educated at Rama Devi Women's Autonomous College and PG Department of English, Utkal University. She obtained her Ph.D Degree from Utkal University in 2004. Apart from teaching English to regular Honours and Post Graduate students, she deals with Communicative English in professional MBA and MCA courses. Further, she conducts training in Spoken English and Personality Development. She has authored several critical papers and one book namely: The Voyage Within: Women in the works of Indian Women Novelists in English. Her other interests include Gender Studies and Literary Criticism.

Dr. Sujit Kumar Acharya, Asst. Professor, Business Admin. (M.B.A., MA PM & IR, M.Com, M.Phil., Ph.D).Email- sujit_acharya@hotmail.com & sujit_acharya@ddceutkal.org

Dr. Sujit K. Acharya is a Lecturer in Department of Business Administration, DDCE, Utkal University. Dr. Acharya holds MBA (HR), M.A. in Personnel Management & Industrial Relation, M.Com.(Finance), M.Phil (Com.), Ph.D. (PM&IR) from Utkal University. His area of specialization is HRM (Performance Appraisal). Dr. Acharya has over 13 years of teaching experience across disciplines like Commerce, Management, PM&IR and Soft Skills. In addition he is also an Expert Corporate and Personality Development Trainer. He has guided numerous Management Projects. Presently five research scholars are continuing their Ph.D under Dr. Acharya. To his credit he has attended numerous Seminars, Workshops and training programs. He has authored 21 number research papers in National level Journal and 02 in International Journal. He contributed numerous chapters to course ware for distance learners. Dr. Acharya is an accomplished Taekwon-Do Player and has represented India at International events. Recently he has published a paper "Representation of HRP in terms of Graphs" in International Journal of Business & Development Research.

Mr. Subas Chandra Mishra, Academic Consultant and Associate Coordinator for Computer Application Courses. Email- subaschm@gmail.com

Mr. Subas Chandra Mishra graduated from Utkal University, obtained MCA and M.Com from Sambalpur University. He is also a Microsoft Certified Engineer and a Cisco Certified Network

Associate. He handles the Computer Science courses offered by the Directorate. He is in-charge of entire IT Hardware of DDCE.

Ms. Rashmi Ranjeeta Das: Academic Consultant and Associate Coordinator for Management Courses. Email- rashmi@ddceutkal.org

Ms. Rashmi Ranjeeta graduated from Utkal University. She obtained MBA (Finance & Marketing) and M.Sc (Environmental Science) from Utkal University. She has undergone Training Programs at INFOSYS, ICICI Bank and IIT, Kharagpur. She has attended two International and seven National Seminars and Conferences in India.

**Sri Nikunja Ranjan Dash, Academic Consultant, Education,
Email : nikunjaedn@ddceutkal.org**

Mr. Nikunja Ranjan Dash has published 03 Papers and has presented a paper in a seminar. He has co-ordinated Seminar, Refresher Course & Orientation Course conducted at DDCE, Utkal University. He worked as junior project fellow in R.I.E (NCERT), Bhubaneswar, and Lecturer in Education in Biju Pattanayk College of Science & Education, Bhubaneswar, and Guest Teacher in Ramakrishna Shiksha Kendra, Bhubaneswar. He takes keen interest in music. He had attended a National Workshop on Development of SLM organized at IGNOU, New Delhi in 2013-14.

**Mr. Jayanta Kumar Dash, Academic Consultant, Political Science
Email : jayanta@ddceutkal.org**

Mr. Jayanta Kumar Dash graduated from Fakir Mohan University, obtained his Post Graduate Degree and M.Phil. Degree from P. G. Department of Political Science, Utkal University. His M.Phil. Dissertation entitled "*G-20: contributions and analysis*". He has served as guest faculty for two years in J.K.B.K. GOVT. College Cuttack. He has presented paper in various seminars. He had attended a National Workshop on Development of SLM organized at IGNOU, New Delhi in 2013-14. He has published two Articles titled "Gross National Happiness; A Bhutanese Innovation" and "Sustainable Development and Gross National Happiness in Bhutan" in September-2014. He is working on Gross National Happiness in Bhutan.

**Mr. Giridhari Sahoo: Academic Consultant, Commerce.
Email: giridhari@ddceutkal.org**

Mr. Giridhari Sahoo, graduated from Utkal University, obtained his M.Com Degree from P.G Department of Commerce, Utkal University and M.Phil Degree from School of Commerce and Management, Ravenshaw University. He has joined Ph.D programme in the P.G Department of Commerce, Utkal University after qualifying for the same. He is a life member of All India Accounting Association and All Odisha Commerce Association. To his academic credit he has attended numerous national & International seminars. He has Qualified UGC NET in Commerce and inter CWA from ICAI. He has published two articles in referred journals. He had attended a National Workshop on Development of SLM organized at IGNOU, New Delhi in 2013-14. He is in charge of IT and Garden at DDCE.

Ms. Renuka Kumar, Academic Consultant, MSW

Email- *krenuka008@gmail.com*

Ms. Renuka Kumar obtained her Master in Social Work from Pune University. Before joining DDCE Utkal University she had worked as College Teacher for Two years and in various NGO's for seven years in social sector. She has also attended seminars and conferences and presented research papers. She had attended a National Workshop on Development of SLM organized at IGNOU, New Delhi in 2014.

Ms. Pragyan Paramita, Academic Consultant, Hindi

Email: *pparamita@ddceutkal.org*

Ms. Pragyan Paramita, obtained her Graduation and M.A. in Hindi from Rama Devi Women's Autonomous College, Bhubaneswar. She has completed her M.Phil from Ravenshaw University. She had attended a National Workshop on Development of SLM organized at IGNOU, New Delhi in 2014.

Mr. Madhab Chandra Sethi Academic Consultant, History

Email; *madhab.setty@gmail.com*

Mr. Madhab Chandra Sethi obtained his Master in Ancient Indian History and M.Phil Degree from Utkal University. He has been continuing Ph.D Programme in the P.G. Dept. of AIHC& Archaeology, Utkal University. Before joining DDCE, Utkal University he had worked as an ICHR & RGNF (UGC) Research fellow for three years. He has attended several national and international Conference held in India related to Art, History and Archaeology and published several papers. He is actively involved in the Archaeological Excavations, conducted by the P.G.Dept. of Ancient Indian History, Culture and Archaeology, Utkal University. He has qualified UGC-NET Examination. His present interests include monuments, rock cut sculpture and architecture. He is a Life Member of Odisha History Congress.

THE OTHER FACULTY

Besides the regular faculty members of DDCE and P.G. Departments of Utkal University a number of faculty members from other educational institutions , professionals including bankers , Chartered Accountants, Cost Accountants, Company Secretaries, Corporate Executives and Researchers at various academic institutions act as part timers. We also avail the services of retired experienced teachers. Faculties are also drawn from affiliated colleges of Utkal University and Biju Patnaik University of Technology.

COURSES OFFERED

Management Programme	CODE
MBA (2 Yr. Distance)	030302
MBA 2 Year Evening Program (Regular Face to Face Mode)	030303
IMBA / BBA (Distance)	030702

P.G. Diplomas (Distance)

Financial Management (Distance)	030403
Marketing Management (Distance)	030405
Human Resource Management (Distance)	030406
Tour & Travel Management (Distance)	030407
Dietetics & Nutrition Management (Distance)	030408
Production & Operation Management (Distance)	030409
Banking & Insurance Management (Distance & Regular)	030404

Computer Science & Application Programme

MCA (3 Yr.)	020304
MCA (2 Yrs. Lateral)	020704
M.Sc. Computer Science & Application	020312
M.Sc. IT	020313
M.Sc. ITM	020314

UNDER GRADUATE PROGRAM: (DISTANCE)

B.A. Pass (Distance)	010200
-----------------------------------	--------

B.A. Hons (Distance)

Education Hons	010105
History Hons	010109

Odia Hons	010114
Pol. Science Hons	010116
Sanskrit	010119
Sociology Hons	010120

B.Com Pass	030200
-------------------------	---------------

B.Com. Hons.

Accounting <i>Hons.</i>	030101
Management <i>Hons.</i>	030102

POST GRADUATION (DISTANCE)

M.A. Economics	010304
M.A. Education	010305
M.A. English	010306
M.A. Hindi	010308
M.A. History	010309
M.A. Odia	010314
M.A. Political Science	010316
M.A. Public Administration	010318
M.A. Sanskrit	010319
M.A. Sociology	010320
Master in Social Work (MSW)	010326
Master in Commerce (M.Com.)	030300

ADMISSION ELIGIBILITY

Course	Eligibility
MBA	Bachelor Degree holder in any discipline or equivalent and qualifying in the Entrance Test.
MBA Evening	Bachelor Degree holder in any discipline or equivalent. Those born before 1 st June 1985. Only working personnel with at least 3 years work experience are eligible.
PGDIM HRM/MM/FM/DNM/TT M/POM	Bachelor Degree holder in any discipline or equivalent.
PGDBIM	Bachelor Degree holder in any discipline or Equivalent. Those born after 31 st May 1992 are only eligible. SC/ST Students would enjoy usual relaxation.
IMBA/BBA	+2 or equivalent
MCA(Both 2 and 3 years)	<p>A. Any Graduate Degree under 10+2+3 pattern recognized by the Utkal University with pass in Mathematics or Statistics as a subject at least of +2 or Senior Secondary Level are eligible for 3 year course .</p> <p style="text-align: center;">OR</p> <p>B. Those who have Passed Bachelor of Computer Application (BCA)/Bachelor of Science with Computer Science (Hon's) / Bachelor of Science in Information Technology (B.Sc.(IT)) / Bachelor of Science in Information Technology & Management (B.Sc.(ITM)) recognized by Utkal University are eligible for 2 year course .</p> <p style="text-align: center;">OR</p> <p>Those Graduate who do not fulfill the conditions as above (i.e either A or B) can be admitted but they are required to pass two additional mathematics papers along with first semester and/or second semester. Unless they clear the mathematics papers they cannot be admitted to the 3rd Semester . Such candidates are eligible for 3 year course.</p> <p>The first and second semesters shall be waived for all those who have passed BCA / B. Sc. (Comp. Sc (H)) / B. Sc (IT) / B. Sc (ITM) i.e. conditions under B . They shall be directly admitted into third semester.</p>
M.A. Economics	Any graduate BA/ B. Com/ B. Tech/B.A. LLB/ B. Sc. LLB/ B.Com LLB etc.
M.A. Education	Any graduate from Utkal University or Any other University with Education as a subject (Hons /Pass / Elective) at graduation level. Those with B.Ed / D.Ed/ Any other recognized teacher's training program under Government/ Board/University are also eligible. Those who are in teaching profession with at least 5 years experience may be granted waiver at the discretion of DDCE.
M.A. English	Any graduate with English as a subject from Utkal University or any other University recognized by Utkal University is eligible to take admission.
M.A. in Hindi	Any graduate with Hindi as a subject from Utkal University or any other University recognized by Utkal University under 10+2+3 is eligible to take admission. Those who have passed Kobida or Ratna are also eligible.
M.A. History	Any graduate from Utkal University or any other University recognized by Utkal University is eligible to take admission.
M.A. Odia	Any graduate (with Odia as subject at least +2 level) from Utkal University or any other University recognized by Utkal University under 10+2+3 is eligible to take admission.
M.A. Political Science	Any graduate from Utkal University or any other University recognized by Utkal University is eligible to take admission.
M.A. Public Administration	Any graduate from Utkal University or any other University recognized by Utkal University is eligible to take admission.
M.A. Sanskrit	Any graduate with Sanskrit as a subject from Utkal University or any other University recognized by Utkal University under 10+2+3 is eligible to take admission. Answers are to be written in Devanagiri. Proficiency in Devanagiri must.
M.A. Sociology	Any graduate from Utkal University or any other University recognized by Utkal University is eligible to take admission.
Master in Social work	Any graduate from Utkal University or any other University recognized by Utkal University under 10+2+3 is eligible to take admission.
M.Com	B.Com, BBA from Utkal University or any other University recognized by Utkal University, Chartered Accountants, Company Secretaries and Cost Accountants are eligible for admission.

SELECTION PROCESS OF ADMISSION & SCHEDULE 2015-2016 SESSION

Course/ No. of Seats	Mode/Medium of Instruction	Selection process	Admission schedule & Other
MBA, P.G. Dip. HR / MM / D&NM / FW/ T&TM/ POM (500)	Distance/English	<ul style="list-style-type: none"> On line admission Test at DDCE for Business Management and Computer Science Programme. Personal interview (in addition to on Line Test) for MBA Evening, P.G Dip in Banking and insurance Management and MCA course. On line Test shall consist at 100 Multiple Choice Questions covering Reasoning, Comprehension, English Language and Quantitative Techniques. Result shall be published in our website on the same day. No other communication shall be sent to you. Rolling on line Test shall be conducted subject to availability of seats. 	<p>Apply Online and submit the printout along with a set of attested copies of mark sheets and certificates from 10th class onwards. Personally submit it or send by post. You shall be allotted a slot for appearing the online test at DDCE. Result would be published on the same day. On selection produce all your original for verification. On verification payment advice shall be generated by DDCE. You are required to make payment and take admission within 7 days from the selection.</p> <p style="text-align: center;">FOR DETAILS AND UPDATES VISIT US AT: www.ddceutkal.ac.in</p>
IMBA / BBA (100)	Distance/English		
MCA (40)/M Sc Computer Sc/MIT	Regular/ English		
MCA - Lateral Entry (40)	Regular/ English		
MBA (64) Evening	Regular /English		
P.G. Dip. in Banking & Insurance Mgt. (24)	Regular/ English	<p>First come first serve</p>	<p>Apply on line. Upload photograph and signature. Take a print out. For assistance you may visit DDCE. Attach all mark sheets and certificates 10th class onwards. Visit DDCE office with originals for spot admission. On verification of your eligibility and originals and submission of CLC and/or migration certificate, a demand note shall be generated. On payment of fees in cash at bank or demand drafts you shall be admitted.</p> <p style="text-align: center;">FOR DETAILS AND UPDATES VISIT US AT: www.ddceutkal.ac.in</p>
B.A.(Pass & Hons.) Unlimited	Distance/ English/Odia		
B.Com.(Pass & Hons.) Unlimited	Distance/ English		
M.A Education (200)	Distance/ English		
M.A Economics (200)	Distance/ English		
M.S.W. (200)	Distance/ English		
M.A (History / Political Science / English / Public Admin /Sociology.) (200 each)	Distance/ English		
M.A (Odia)(200)	Distance/ Odia		
M.A Sanskrit (200)	Distance/ Sanskrit in Devanagiri		
M.A., Hindi (200)	Distance/ Hindi		
M.Com. (200)	Distance/ English		

SELECTION PROCESS

- ◆ On line admission Test at DDCE for Business Management and Computer Science Programme.
- ◆ Personal interview (in addition to on Line Test) for MBA Evening, P.G Dip in Banking and insurance Management and MCA course.
- ◆ On line Test shall consist at 100 Multiple Choice Questions covering Reasoning, Comprehension, English Language and Quantitative Techniques.
- ◆ Result shall be published in our website on the same day. No other communication shall be sent to you.
- ◆ Rolling on line Test shall be conducted subject to availability of seats.
- ◆ For B.A/B.Com and M.A courses the selection process is First come first serve. No admission test is involved.

DOCUMENTS REQUIRED FOR ADMISSION

- ◆ A set of self attested copies of mark sheets and certificates from 10th class onwards along with originals are required for verification. Atleast one passport size photograph.
- ◆ Original C.L.C. and Migration Certificate (for the Candidates from other than Utkal University).
- ◆ Caste certificate for SC & ST candidates.
- ◆ Each candidate is required to carry a photo identity card (Driving license / Pan Card / voter's I Card or Identity card issued by employer / educational institute etc.) for the online test for Management and Computer Science Programme.

LAST DATE WITH USUAL FEES UP TO 31-07-2015
LAST DATE WITH LATE FEES RS.500 UP TO 31-08-2015
FOR ALL COURSES SUBJECT TO AVAILABILITY OF SEATS

FEES STRUCTURE FOR ADMISSION SESSION 2015-2016

Course	At the time of admission						2 nd year		3 rd year		4 th year		5 th year	
	Cost of Form (Rs.)	Course Fee (Rs.)	Exam. Fee(Rs.)	SSDC (Rs.)	Corpus Fund (Rs.)	Course Fee (Rs.)	Exam Fee (Rs.)	Course Fee (Rs.)	Exam Fee (Rs.)	Course Fee (Rs.)	Exam Fee (Rs.)	Course Fee (Rs.)	Exam Fee (Rs.)	
MBA(Distance Mode)	500	25000	2400	3000	3000	25000	2600							
MBA(Evening Regular Program)	500	30000	2400	10000	3000	30000	2600							
P.G. Dip. HR / MM / D&NM / FM/ T&TM/ POM(Distance Mode)	500	18000	2600	3000	3000									
IMBA / BBA(Distance Mode)	500	10000	2400	3000	3000	10000	2400	10000	2600	15000	2400	15000	2600	
P.G. Dip. in Banking & Insurance Mgt.(Morning Regular Mode)	500	25000	2600	10000	3000									
MCA. (Morning Regular Mode)	500	25000	2400		3000	25000	2400	25000	2600					
MCA - Lateral Entry.														
MSc.CS/MSc.IT/M.Sc.ITM (Morning Regular Mode)	500	25000	2400		3000	25000	2600							
M.A. (Oriya / History / Political Science / English / Public Admin /Sociology /Economics /Education M.S.W./ Hindi/ M.Com.)(Distance Mode)	500	7000	2400		2500	7000	2600							
M.A. Sanskrit(Distance Mode)	500	4000	2400		2500	4000	2600							
B.A/B.Com.(Hons.)(Distance Mode)	500	5000	800		1500	5000	800	5000	1000					
B.A/B.Com.(Pass)	500	4000	800		1500	4000	800	4000	1000					

All Fees are Payable by 31st July

Readmission /Admission Late Fee Rs. 500/- from 1st August 2015.

FOR GENERATION OF DEMAND NOTE /CHALLAN VISIT OUR WEBSITE : www.ddceutkal.ac.in

For change of subjects at PG Level - Fresh Application shall be required with fees of Rs. 500/- . This shall be allowed upto 31st August.
For BA/B.Com change of subjects after admission shall be allowed with fees of Rs. 200/- only upto 31st August, 2015 (i.e. the last date of admission)

NOTE : CONTACT HELP DESK AT DDCE

FOR UPDATES VISIT ddceutkal.ac.in

DIRECTOR

CURRICULUM/ COURSES OF STUDY
Master of Business Administration (Course Code- 030302)
UNDER CBCS (With effect from 2013)

Year/Sem.	Category	Paper No.	Title of the Paper	Total Marks
I Year 1st Sem. (800 marks)	Core (eight papers)	1330302101	Management Concepts and Practices	100
		1330302102	Business Regulatory Frame Work	100
		1330302103	Financial Accounting	100
		1330302104	Quantitative Methods for Management	100
		1330302105	Human Resource Management	100
		1330302106	Marketing Management	100
		1330302107	Financial Management	100
		1330302108	Organization Behaviour	100
I Year 2nd Sem. (800 marks)	Core (eight papers)	1330302109	Managerial Economics	100
		1330302110	Corporate Tax Law	100
		1330302111	Business Policy & Strategic Management	100
		1330302112	Management of Change & Strategic Issues	100
		1330302113	Cost and Management Accounting	100
		1330302114	Research Methodology	100
		1330302115	Retail Management	100
		1330302116	Production & Operation Management	100
II Year 3rd Sem. (600 marks)	Elective (Select any six Papers) Select papers shall be offered by DDCE.	1330302201	Management Communication & Skill Development	100
		1330302202	Business Ethics & Corporate Governance	100
		1330302203	Entrepreneurship Development	100
		1330302204	Banking & Insurance Management	100
		1330302205	E- Business	100
		1330302206	International Business	100
		1330302207	Management Information System	100
		1330302208	Indian Ethos & Value	100
		1330302209	Indian Society & Culture	100
		1330302210	Marketing Services	100
		1330302211	Business History	100
		1330302212	Project Management	100
		1330302213	Indian Economy	100
		1330302214	Event Management	100
		1330302215	Accounting Information System	100
		1330302216	Odiahan Studies(Geography/Economy/ Developmental Issues)	100
		1330302217	Indian Society & Culture	100

- Under the third Semester a student may choose a paper from MA Economics /Public admn./ Political Sc./ Sociology / MSW offered by DDCE subject to prior approval by the Director DDCE.

II Year 4 th Sem (1000 marks)	Elective and Free Elective (Eight Papers)	GROUP- A --HRM		
		1330302218	HRPD	100
		1330302219	MERRL	100
		1330302220	MTD	100
		1330302221	IHRM	100
		GROUP- B --FM		
		1330302222	FMI	10
		1330302223	MBFS	100
		1330302224	SAPM	100
		1330302225	IF	100
		GROUP- C --MM		
		1330302226	CB	100
		1330302227	APM	100
		1330302228	SDM	100
		1330302229	PBM	100
		GROUP- D --BIM		
		1330302230	MBIC	100
		1330302231	RCM	100
		1330302232	BIL	100
		1330302233	BIM	100
		GROUP- E --TTM		
		1330302234	TTT	100
		1330302235	HM	100
		1330302236	TMEM	100
		1330302237	TOTM	100
		GROUP- F --DNM		
		1330302238	DTM	100
		1330302239	HSM	100
		1330302240	MMFI	100
		1330302241	DDNM	100
		GROUP- G --POM		
		1330302242	TQM	100
		1330302243	PMM	100
		1330302244	OPC	100
		1330302245	TM	100
		GROUP- H --ISM		
		1330302246	DBMS & RDBMS	100
		1330302247	ERP	100
		1330302248	SAD	100
		1330302249	TB	100
	Core	1330302117	Project Viva	200

- In the fourth Semester, we offer eight groups of special papers A-H. Each group consists of four papers. One has to opt one group. Besides one has to choose four other Papers (as Free Elective) from other 7 groups (i.e excluding the specialization/ Elective paper group). These four papers can be also be drawn from a single group.
- The best way to predict the future is to create it.
- A manager is responsible for the application and performance of knowledge.

INTEGRATED MASTER OF BUSINESS ADMINISTRATION

(Course Code- 030702)

(A Five Year Program)

Bachelor In Business Administration

(Course Code- 030702)

(A Three Year Program)

Course Structure

(Course is under revision)

Course Code: 030702

Year/ Sem.	Category	Paper	Title of the Paper	Total Marks
I Year 1st Sem.	Core (Five papers)	13030702101	Management Concepts and Practices	100
		13030702102	English - I	100
		13030702103	Business Mathematics	100
		13030702104	Psychology	100
		13030702105	Computer Fundamentals	100
I Year 2nd Sem.	Core (Five papers)	13030702106	Financial Accounting	100
		13030702107	Fundamentals of Economics	100
		13030702108	Business Organisation	100
		13030702109	Business Statistics	100
		13030702110	Information Technology in Business	100
II Year 3rd Sem.	Core (Five papers)	13030702111	Organisational Behaviour	100
		13030702112	Cost Accounting	100
		13030702113	Managerial Economics	100
		13030702114	English - II	100
		13030702115	Web Fundamental	100
II Year 4th Sem.	Core (Five papers)	13030702116	Quantitative Methods for Management	100
		13030702117	Business Economic & Environment	100
		13030702118	Business Regulatory Frame Work	100
		13030702119	Indian Ethos & Value	100
		13030702120	Management Accounting	100
III Year 5th Sem.	Core (Five papers)	13030702121	Indian Economy & Macro Economics	100
		13030702122	Operation Research	100
		13030702123	Written & Oral Communication	100
		13030702124	Contemporary Indian Society & Culture	100
		13030702125	Research Methodology	100
III Year 6th Sem. (700 Marks)	Core (Six papers)	13030702126	Human Resources Management	100
		13030702127	Financial Management	100
		13030702128	Marketing Management	100
		13030702129	Production & Operation Management	100
		13030702130	Mgt. Information System	100
		13030702131	Summer Training Report	100

IV Year 7th Sem.	Core (Five papers)	13030702132	Management Comm. Skills & Development	100
		13030702133	Business Ethics & Corporate Governance	100
		13030702134	Industrial Laws	100
		13030702135	Business and company law	100
		13030702136	E-Business	100
IV Year 8th Sem.	Core (Five papers)	13030702137	Corporate & Tax Law	100
		13030702138	International Business	100
		13030702139	Entrepreneurship Development	100
		13030702140	Management Support System	100
		13030702141	Business Policy & Strategic Management	100
Year 9th Sem. (600 marks)	Elective & Free Electives (Six papers)		GROUP- A --HRM	
		13030702142	HRPD	100
		13030702143	MERRL	100
		13030702144	MTD	100
			GROUP- B --FM	
		13030702145	FMI	100
		13030702146	MBFS	100
		13030702147	SAPM	100
			GROUP- C --MM	
		13030702148	CB	100
		13030702149	APM	100
		13030702150	SDM	100
			GROUP- D --POM	
		13030702151	TQM	100
		13030702152	PMM	100
		13030702153	OPC	100
			GROUP- E --ISM	
		13030702154	DBMS & RDBMS	100
		13030702155	ERP	100
		13030702156	SAD	100

NB:

- In the 9th Semester we offer five specialization group (A-E) consists of three paper each.
- One has to opt one group (three papers). Besides one has to choose three papers from any other four groups. (i.e. excluding the specialization/Elective paper group opted). These three papers can also be drawn from a single group.

V Year 10th Sem. (600 marks)	Elective & Free Electives (Four papers)		GROUP- A --HRM	
		13030702157	IHRM	100
		13030702158	MCSI	100
			GROUP- B --FM	
		13030702159	IF	100
		13030702160	MA	100
			GROUP- C --MM	
		13030702161	PBM	100
		13030702162	MR & SERVICES	100
			GROUP- D --POM	
		13030702163	TM	100
		13030702164	LM	100
			GROUP- E --ISM	
		13030702165	TB	100
		13030702166	DS	100
	Core	13030702167	Project Viva	200

NB:

- In 10th Semester one will cover the rest two papers of the elective group opted in the 9th Semester.
- One will opt any two papers from any group (other than those opted earlier). These two papers can also be drawn from the same free Elective group opted in the 9th Semester.
- Total Mark in BBA-3200 & IMBA- 5400.



POST GRADUATE DIPLOMA IN MANAGEMENT

(A One Year Program)

Course Structure: PGDHRM
(COURSE CODE- 030406)

Year/ Sem.	Category	Paper	Title of the Paper	Total Marks
I Year 1st Sem.	Core (Five papers)	1330406101	Management Concepts and Practices	100
		1330406102	Managerial Communication Skill Development	100
		1330406103	Research Methodology	100
		1330406104	Organisation Behaviour	100
		1330406105	Human Resource Management	100
I Year 2nd Sem.	Core (Five papers)	1330406106	Human Resources Planning & Development	100
		1330406107	Managing Employee Relation & Related Laws	100
		1330406108	Management of Training & Development	100
		1330406109	International Human Resources Management	100
		1330406110	Project Report & Viva-voce.	100

Course Structure: PGDMM
(COURSE CODE- 030405)

Year/ Sem.	Category	Paper	Title of the Paper	Total Marks
I Year 1st Sem.	Core (Five papers)	1330405101	Management Concepts and Practices	100
		1330405102	Managerial Communication Skill Development	100
		1330405103	Research Methodology	100
		1330405104	Organisation Behaviour	100
		1330405105	Marketing Management	100
I Year 2nd Sem.	Core (Five papers)	1330405106	Consumer Behaviour	100
		1330405107	Advertising & Promotion Management	100
		1330405108	Sales & Distribution Management	100
		1330405109	Product & Brand Management	100
		1330405110	Project Report & Viva-voce.	100

Course Structure: PGDFM
(COURSE CODE- 030403)

Year/ Sem.	Category	Paper	Title of the Paper	Total Marks
I Year 1st Sem.	Core (Five papers)	1330403101	Management Concepts and Practices	100
		1330403102	Managerial Communication Skill Development	100
		1330403103	Research Methodology	100
		1330403104	Accounting for Decision Making	100
		1330403105	Financial Management	100
I Year 2nd Sem.	Core (Five papers)	1330403106	Financial Market & Institution	100
		1330403107	Merchant Banking & Financial Services	100
		1330403108	Security Analysis & Portfolio Management	100
		1330403109	International Finance	100
		1330403110	Project Report & Viva-voce.	100

Course Structure: PGDDNM
(COURSE CODE- 030408)

Year/ Sem.	Category	Paper	Title of the Paper	Total Marks
I Year 1st Sem.	Core (Five papers)	1330408101	Management Concepts and Practices	100
		1330408102	Managerial Communication Skill Development	100
		1330408103	Research Methodology	100
		1330408104	Organisational Behaviour	100
		1330408105	Food & Nutritional Management	100
I Year 2nd Sem.	Core (Five papers)	1330408106	Human System Management	100
		1330408107	Therapeutic Management	100
		1330408108	Microbial Management & Food Industry	100
		1330408109	Public Health Policy and Health Management	100
		1330408110	Project Report & Viva-voce.	100

Course Structure: PGDTTM
(COURSE CODE- 030407)

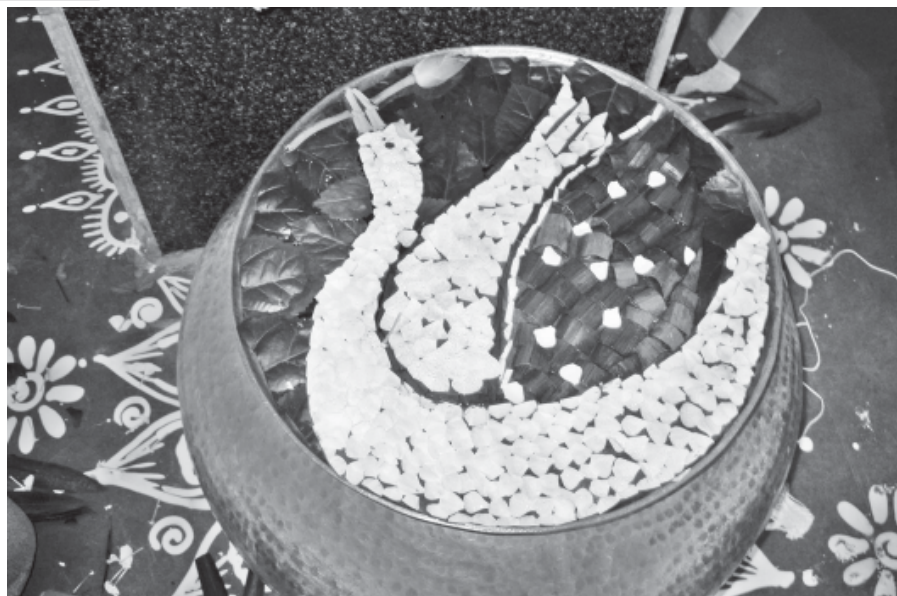
Year/ Sem.	Category	Paper	Title of the Paper	Total Marks
I Year 1st Sem.	Core (Five papers)	1330408101	Management Concepts and Practices	100
		1330408102	Managerial Communication Skill Development	100
		1330408103	Research Methodology	100
		1330408104	Organisational Behaviour	100
		1330408105	Food & Nutritional Management	100
I Year 2nd Sem.	Core (Five papers)	1330408106	Human System Management	100
		1330408107	Therapeutic Management	100
		1330408108	Microbial Management & Food Industry	100
		1330408109	Public Health Policy and Health Management	100
		1330408110	Project Report & Viva-voce.	100

MASTER OF BUSINESS ADMINISTRATION (Course Code- 030303)
UNDER CBCS (With effect from 2014)
UNDER FACE TO FACE MODE (Evening Program)

Year/Sem.	Category	Paper No.	Title of the Paper	Total Marks	
I Year 1 st Sem. (800 marks)	Core (eight papers)	1330302101	Management Concepts and Practices	100	
		1330302102	Business Regulatory Frame Work	100	
		1330302103	Financial Accounting	100	
		1330302104	Quantitative Methods for Management	100	
		1330302105	Human Resource Management	100	
		1330302106	Marketing Management	100	
		1330302107	Financial Management	100	
		1330302108	Organization Behaviour	100	
I Year 2nd Sem. (800 marks)	Core (eight papers)	1330302109	Managerial Economics	100	
		1330302110	Corporate Tax Law	100	
		1330302111	Business Policy & Strategic Management	100	
		1330302112	Management of Change & Strategic Issues	100	
		1330302113	Cost and Management Accounting	100	
		1330302114	Research Methodology	100	
		1330302115	Retail Management	100	
		1330302116	Production & Operation Management	100	
II Year 3 rd Sem. (600 marks)	Elective (Select any six Papers) Select papers shall be offered by DDCE.	1330302201	Management Communication & Skill Development	100	
		1330302202	Business Ethics & Corporate Governance	100	
		1330302203	Entrepreneurship Development	100	
		1330302204	Banking & Insurance Management	100	
		1330302205	E- Business	100	
		1330302206	International Business	100	
		1330302207	Management Information System	100	
		1330302208	Indian Ethos & Value	100	
		1330302209	Indian Society & Culture	100	
		1330302210	Marketing Services	100	
		1330302211	Business History	100	
		1330302212	Project Management	100	
		1330302213	Indian Economy	100	
		1330302214	Event Management	100	
		1330302215	Accounting Information System	100	
		1330302216	Odiahan Studies(Geography/Economy/ Developmental Issues)	100	
		1330302217	Indian Society & Culture	100	
➤ Under the third Semester a student may choose a paper from MA Economics /Public admn./ Political Sc./ Sociology / MSW offered by DDCE subject to prior approval by the Director DDCE.					
II Year 4 th Sem (1000 marks)	Elective and Free Elective (Eight Papers)	GROUP- A --HRM			
		1330302218	HRPD	100	
		1330302219	MERRL	100	
		1330302220	MTD	100	
		1330302221	IHRM	100	
		GROUP- B --FM			
		1330302222	FMI	10	
		1330302223	MBFS	100	
		1330302224	SAPM	100	
		1330302225	IF	100	
		GROUP- C --MM			
		1330302226	CB	100	
		1330302227	APM	100	
		1330302228	SDM	100	
		1330302229	PBM	100	

		GROUP- D --BIM		
		1330302230	MBIC	100
		1330302231	RCM	100
		1330302232	BIL	100
		1330302233	BIM	100
		GROUP- E --TTM		
		1330302234	TTT	100
		1330302235	HM	100
		1330302236	TMEM	100
		1330302237	TOTM	100
		GROUP- F --DNM		
		1330302238	DTM	100
		1330302239	HSM	100
		1330302240	MMFI	100
		1330302241	DDNM	100
		GROUP- G --POM		
		1330302242	TQM	100
		1330302243	PMM	100
		1330302244	OPC	100
		1330302245	TM	100
		GROUP- H --ISM		
		1330302246	DBMS & RDBMS	100
		1330302247	ERP	100
		1330302248	SAD	100
		1330302249	TB	100
	Core	1330302117	Project Viva	200

- In the fourth Semester, we offer eight groups of special papers A-H. Each group consists of four papers. One has to opt one group. Besides one has to choose four other Papers (as Free Elective) from other 7 groups (i.e excluding the specialization/ Elective paper group). These four papers can be also be drawn from a single group.
- The best way to predict the future is to create it.
- A manager is responsible for the application and performance of knowledge.



POST GRADUATE COURSES

MASTER OF ARTS IN ECONOMICS

Course Code -010304

COURSE STRUCTURE

Year/ Semester	Category	Paper Code	Title of the Paper	Maximum Marks
I Year 1st Semester	Core	1310304101	History of Economic Thought	100
	Core	1310304102	Principles of Public Finance and Fiscal Policy	100
	Core	1310304103	Microeconomic Theory	100
	Core	1310304104	Macroeconomic Theory	100
I Year 2nd Semester	Core	1310304105	Economics of Development and Growth	100
	Core	1310304106	International Trade	100
	Core	1310304107	Economics of Agriculture	100
	Core	1310304108	Problems of Indian Agriculture	100
	Core	1310304109	Budgetary System with special reference to India	100
II Year 3rd Semester	Elective Discipline Specific Any Three (* These would be offered)	1310304201	Mathematical Economics	100
		1310304202	Econometrics	100
		1310304203	International Economics	100
		1310304204	International Economic Relations	100
		1310304205	Managerial Economics*	100
		1310304206	International Monetary Management	100
		1310304207	Cooperation Principles and Management	100
		1310304208	Problems of co-operation in India	100
		1310304209	Economics of Public Sectors in India*	100
		1310304210	Business Economics and Environment*	100
		1310304211	Planning and Regional Economics	100
		1310304212	Rural Development*	100
	Elective Discipline free Any Two	1310304113	Organizational Behaviour*	100
		1310304114	Women in India *	100
		1310304115	Development Administration*	100
		1310304116	Disaster Management*	100
		1310304117	Freedom Struggle*	100
II Year 4th Semester	Core	1310304110	Banking and Monetary Management	100
	Core	1310304111	Regional Economics	100
	Core	1310304112	Dissertation with Viva voce	200
			Total	1800

Select elective courses shall be offered

MASTER OF ARTS IN EDUCATION

Course Code-010305

COURSE STRUCTURE

Year/ Semester	Category	Paper Code	Title of the Paper	Max. Marks
I Year 1st Semester	Core	13010305101	Philosophical foundation of Education	100
	Core	13010305102	Sociological Foundation of Education	100
	Core	13010305103	Advance Educational Psychology	100
	Core	13010305104	Teachers Education	100
I Year 2nd Semester	Core	13010305105	Modern Trends in Methods of Teaching/ English/Odia/ History/ Math/ Science/ Geography- Theory-100	100
	Core	13010305106	Educational Technology	100
	Core	13010305107	Methods of Educational Research and Statistics	100
	Core	13010305108	Educational Planning and Management	100
	Core	13010305109	Comparative Education: UK/USA/ India	100
II Year 3rd Semester *These would be offered	Elective Discipline Specific (Any Three)	13010305210	Modern Trends in Methods of Teaching English / Odia/ History/Math/Science/Geography Practical-100 *	100
		13010305211	Modern Educational Thinkers*	100
		13010305212	Western Educational Thinkers	100
		13010305213	Educational Policy documents of India since independence.	100
		13010305214	Education in Odisha	100
		13010305215	Distance Education	100
		13010305216	Adult and Non-formal Education	100
		13010305217	Inclusive Education	100
		13010305218	Special Education*	100
		13010305219	Early Childhood Education*	100
		13010305220	Guidance and Counseling in Education*	100
	Elective Discipline Free (Any Two)	13010305124	Organizational Behaviour*	100
		13010305125	Women in India*	100
		13010305126	Development Administration*	100
		13010305127	Freedon Struggle/ National Moment*	100
		13010305128	Indian Political Thinkers*	100
II Year 4th Semester	Core	13010305121	Curriculum Planning and Development	100
	Core	13010305122	Tools and Technique of Educational Measurement and Evaluation	100
	Core	13010305123	Dissertation (Dissertation 100 + Viva Voce and Presentation-100)	200
			Total	1800

Select elective courses shall be offered

MASTER OF ARTS IN ENGLISH

Course Code-010306

COURSE STRUCTURE

Year/Semester	Category	Paper Code	Title of the Paper	Max.Marks
I Year 1st Semester	Core	13010306101	Concepts in Literature	100
	Core	13010306102	Classical and neo-classical critical theories	100
	Core	13010306103	Literature and Social history-I	100
	Core	13010306104	Literature and Social history-II	100
I Year 2nd Semester	Core	13010306105	The novel in 18 th -19 th Centuries	100
	Core	13010306106	Non Fiction –letter, Essay, biography and Auto -biography.	100
	Core	13010306107	Theory- Romantic & Victorian theory & Criticism	100
	Core	13010306108	Romantic Poetry	100
	Core	13010306109	Fiction 19 th -20 th centuries	100
II Year 3rd Semester Select any one Group and Two papers from discipline free elective *These would be offered	Group A	13010306210	Renaissance drama- Shakespearian (with alternate play)*	100
		13010306211	The 20 th Century (with alternate play)*	100
		13010306212	Modern Drama (with alternate play)*	100
	Group B	13010306213	Victorian Poetry (with alternate play)*	100
		13010306214	Modern Poetry (with alternate play)*	100
		13010306215	Literature of Europe (with alternate play)*	100
	Group C	13010306216	20 th Century Criticism*	100
		13010306217	American Literature-I*	100
		13010306218	American Literature-II*	100
	Group D	13010306219	Commonwealth Literature-I*	100
		13010306220	Commonwealth Literature-II*	100
		13010306222	Basics of Written Communication*	100
	Elective Discipline Free Any Two	13010306227	Odia Sahityare Itihas*	100
		13010306228	Women in India*	100
		13010306229	Special Studies of Tulsi Das*	100
		13010306230	Freedom Struggle/ National Movement*	100
		13010306231	Indian Political Thinkers*	100
II Year 4th Semester	Core	13010306223	Contemporary Indian Writing in English-I	100
	Core	13010306224	Contemporary Indian Writing in English-II	100
	Core	13010306225	Essay: on a writer (20 Numbers) –(Any Five)	100
	Core	13010306226	Dissertation	100
			Total	1800

Select elective courses shall be offered

MASTER OF ARTS IN HINDI

Course Code -010308

COURSE STRUCTURE

Year/ Semester	Category	Paper Code	Title of the Paper	Max. Marks
I Year 1 st Semester	Core	13010308101	History of Hindi Literature(Ancient and Medieval)	100
	Core	13010308102	History of Hindi Literature-(Modern)	100
	Core	13010308103	Indian Poetics	100
	Core	13010308104	Western Poetics	100
I Year 2 nd Semester	Core	13010308105	Ancient Poetry(Text)	100
	Core	13010308106	Medieval Poetry(Text)	100
	Core	13010308107	Modern Poetry(Text)	100
	Core	13010308108	Novel and Story (Text) (Short Stories)	100
	Core	13010308109	Drama, One Act Play and Essay(Text)	100
II Year 3 rd Semester	Elective Discipline Specific Any Three	13010308210	Prayojan Mulak Hindi(Karyalayee Hindi, Paribhasik Shabdabali Hindi Ka Vividh Roop: Rajbhasha, Rashtrabhasha, Sanchar Bhasa, Kavyabhasha)	100
		13010308211	Hindi Ka Prayojan(Patrakarita, Electronic Media, Advertisement, Film Appreciation)*	100
		13010308212	Nari Vimarsh*	100
		13010308213	Theory & Practice of Translation*	100
		13010308214	Dalit Vimarsh	100
		13010308215	Tulantmak Sahitya	100
		13010308216	Patrakarita	100
		13010308217	Special Study- Tulasi Das*	100
		13010308218	Adhunik Bharatiya Sahitya	100
	Elective Discipline Free Any Two	13010308123	Literary Terms	100
		13010308124	Odia Sahityare Itihas	100
		13010308125	Jagannath Sanskruti	100
		13010308126	Freedom Struggle	100
		13010308127	Indian Political Thinkers	100
	II Year 4 th Semester	Core	13010308119	General Principles of Language
Core		13010308120	Hindi Bhasa Ka Vikas Aur Boliyan	100
Core		13010308121	Project Work(Translation of 40 pages English or Odia to Hindi)	100
Core		13010308122	Dissertation	100
			Total	1800

Select elective courses shall be offered

MASTER OF ARTS IN HISTORY

Course Code -010309

COURSE STRUCTURE

Year/ Semester	Category	Paper Code	Title of the Paper	Max. Mark
I Year 1st Semester	Core	13010309101	Ancient Civilizations	100
	Core	13010309102	Medieval Societies	100
	Core	13010309103	World History(1500-1900 A.D)	100
	Core	13010309104	Twentieth Century of World (1900-1945)	100
I Year 2nd Semester	Core	13010309105	Twentieth Century of World (1945-2000)	100
	Core	13010309106	Historical Theory and Methods	100
	Core	13010309107	Indian Historiography	100
	Core	13010309108	Cultural Heritage of India	100
	Core	13010309109	Contemporary History of India from 1947-2010	100
II Year 3rd Semester	Group-A	13010309210	Political and Administrative History of Ancient India(Early time to 1 st century B.C)*	100
		13010309211	Political and Administrative History of Ancient India(1 st Century B.C to 8 th Century A.D)*	100
		13010309212	Political and Administrative History of Ancient India(8 th -12 th Century A.D)*	100
	Group-B	13010309213	Political and Administrative History of Medieval India(1206-1526)*	100
		13010309214	Political and Administrative History of Medieval India(1526-1707)*	100
		13010309215	Socio-Cultural and Economic History of Medieval India*	100
	Group-C	13010309220	Constitutional and Administrative History of Modern India*	100
		13010309222	Socio Cultural and Economic History of Modern India*	100
		13010309219	Nationalist Movement in India*	100
	Group-D	13010309216	History of Odisha(Earliest to 1435)*	100
		13010309217	History of Ancient Odisha from 1435 to 1803*	100
		13010309218	History of Odisha(1803 to 1948)*	100
	Discipline Free Any Two	13010309127	History of Science and Technology in India *	100
		13010309128	Odia Sahityare Itihas*	100
		13010309129	Jagannath Sanskruti*	100
		13010309130	Cultural Heritage Management*	100
		13010309131	Indian Economy*	100
II Year 4th Semester	Core	1301030924	Women in India*	100
	Core	13010309125	History of Far East	100
	Core	13010309126	Dissertation with Viva Voce and Essay	200
			Total	1800

Select elective courses shall be offered

MASTER OF ARTS IN ODIA

Course Code -010314

COURSE STRUCTURE

Year/ Semester	Category	Paper Code	Title of the Paper	Max. Marks
I Year 1st Semester	Core	13010314101	History of Odia Literature-I	100
	Core	13010314102	History of Odia Literature-II	100
	Core	13010314103	Language and Linguistic	100
	Core	13010314104	Literature and Literary Theories	100
I Year 2nd Semester	Core	13010314105	Epic(Purana) Poems and Modern Poems	100
	Core	13010314106	Stories and Novels	100
	Core	13010314107	Essay, Biography and Travelogue	100
	Core	13010314108	Odia Grammar	100
	Core	13010314109	Translation- Theories and Application	100
II Year 3rd Semester	Elective Discipline Specific (Any Three)	13010314210	Linguistic-I	100
		13010314211	Linguistic-II	100
		13010314212	Linguistic-III	100
		13010314213	Theatre and Theories of Dramatics*	100
		13010314214	Theories of Dramatics*	100
		13010314215	Drama and Dramatics*	100
		13010314216	Modern Poetry*	100
		13010314217	Modern Poetry and Poets.*	100
		13010314218	Post Independent Odia Poetry*	100
		13010314219	Jagannath Cult and Religion-I*	100
		13010314220	Jagannath Cult and Religion-II	100
		13010314221	Jagannath Cult and Religion-III	100
	Discipline Free (Any Two)	13010314126	Literary Terms	100
		13010314127	Women In India	100
		13010314128	Special Studies of Tulsi Das	100
		13010314129	Freedom Struggle/ National Movement	100
		13010314130	Indian Political Thinkers	100
II Year 4th Semester	Core	13010314122	Odisha's Folk Literature and Culture	100
	Core	13010314123	Short History of Odisha	100
	Core	13010314124	Essay: on a writer and his work (20 Numbers) –(Any Five)	100
	Core	13010314125	Dissertation	100
			Total	1800

Select elective courses shall be offered

M.A. IN POLITICAL SCIENCE

Course Code -010316

COURSE STRUCTURE

Year/ Semester	Category	Paper Code	Title of the Paper	Total
I Year 1st Semester	Core	13010316101	Comparative politics- Concepts and Methods	100
	Core	13010316102	Administrative theory: Principles and Approaches	100
	Core	13010316103	International relations: Major concepts and theories	100
	Core	13010316104	Western Political Thought (Ancient and Medieval)	100
I Year 2nd Semester	Core	13010316105	Indian Government and Politics: Basics/Political Ideologies/Nation Building and National Integration in India	100
	Core	13010316106	Comparative political processes	100
	Core	13010316107	Global politics: contemporary challenges and issues	100
	Core	13010316108	Contemporary debates in political theory	100
	Core	13010316109	Western Political Thought (Modern)	100
II Year 3rd Semester	Elective Discipline Specific (Any Three)	13010316210	Public administration and management *	100
		13010316211	Political Sociology: Ideas and Concepts*	100
		13010316212	Human Right	100
		13010316213	Society and Polity in India*	100
		13010316214	Gender and Politics	100
		13010316215	Research Methodology and Statistical Methods	100
		13010316216	Contemporary Political Theory	100
		13010316217	Culture, Politics and Society in India	100
		13010316219	Contemporary International Studies	100
		13010316220	Environment and development: policy and politics	100
	Elective Discipline Free (Any Two)	13010316125	Organizational Behaviour*	100
		13010316126	Women In India*	100
		13010316127	Development Administration*	100
		13010316128	Disaster Management*	100
		13010316129	Freedom Struggle/ National Movement*	100
II Year 4th Semester	Core	13010316122	Indian Political Ideas	100
	Core	13010316123	India and the world	100
	Core	13010316124	Dissertation and Viva Voce	200
			Total	1800

Select elective courses shall be offered

MASTER OF ARTS IN PUBLIC ADMINISTRATION

Course Code -010318

COURSE STRUCTURE

Year/ Semester	Category	Paper Code	Title of the Paper	Max. Marks
I Year 1st Semester	Core	13010318101	Administrative Theory	100
	Core	13010318102	Comparative Public Administration	100
	Core	13010318103	Indian Administration	100
	Core	13010318104	Administrative Thinkers	100
I Year 2nd Semester	Core	13010318105	Organizational Behavior & Management Process	100
	Core	13010318106	Public Personnel Administration.	100
	Core	13010318107	Development Administration	100
	Core	13010318108	Local Governance.	100
	Core	13010318109	Research Methodology	100
II Year 3rd Semester	Elective Discipline Specific (Any Three)	13010318210	Disaster Management*	100
		13010318211	Good Governance	100
		13010318212	Public Policy	100
		13010318213	Financial Administration in India	100
		13010318214	Urban Development*	100
		13010318216	Indian Economy	100
		13010318217	Rural Development	100
		13010318219	Environmental Impact Assessment and Social Impact Assessment	100
		13010318220	Planning and Regional Economics	100
	Elective Discipline Free (Any Two)	13010318124	Women in India*	100
		13010318125	Cultural Heritage Management*	100
		13010318126	Society and Polity in India	100
		13010318127	Freedom Struggle/ National Movement*	100
		13010318128	Indian Political Thinkers*	100
II Year 4th Semester	Core	13010318121	International Administration	100
	Core	13010318122	Human Resource and Management	100
	Core	13010318123	Dissertation and Viva	200
			Total	1800

Select elective courses shall be offered

MASTER OF ARTS IN SANSKRIT

Course Code - 010319

Note: NO COURSE MATERIAL IN SANSKRIT IS AVAILABLE. THE MEDIUM OF INSTRUCTION AND EXAMINATION IS SANSKRIT -DEVANAGIRI

COURSE STRUCTURE

Year/Semester	Category	Paper Code	Title of the Paper	Total Mark
I Year 1 st Semester	Core	13010319101	Vedic Language & Literature	100
	Core	13010319102	Grammar (Sidhanta Kaumudi)	100
	Core	13010319103	Systems of Indian Philosophy-I	100
	Core	13010319104	Sanskrit Prose and Poetry	100
I Year 2 Semester	Core	13010319105	Sanskrit Plays, Poetics and Dramaturgy-I	100
	Core	13010319106	Ancillary Vedic Literature	100
	Core	13010319107	Philology and Introduction to Grammar	100
	Core	13010319108	Systems of Indian Philosophy-II	100
	Core	13010319109	Sanskrit Plays	100
II Year 3 rd Semester (Any Five) Select Elective papers to be offered by DDCE	Elective Discipline specific (Any Three)	13010319210	Poetics and Dramaturgy-II	100
		13010319211	History of Vedic, Epic and Classical Sanskrit Literature	100
		13010319212	Vedic Literature (Veda) Samhita Text	100
		13010319213	Vedic Literature (Veda) Brahmana, Aranyaka and Upanishad texts	100
		13010319214	Classical Literature (Sahitya) Prose & Poetry	100
		13010319215	Vedanga- Nirukta	100
		13010319216	Different Schools of Kavyashastra	100
		13010319217	Grammar (Vyakarana) Krdanta and Atmanepada	100
		13010319218	Grammar (Vyakarana) Philosophical Texts-I	100
		13010319219	Grammar (Vyakarana) Philosophical texts-II and Essay	100
	Elective Discipline Free (Any Two)	13010319132	Literary Terms	100
		13010319133	Odia Sahitya Itihas	100
		13010319134	Jagannath Sanskuti	100
		13010319135	Philosophy (Darshana) Nyayasutra and Vakyapadiya	100
		13010319136	History of Purana Literature and Essay related to the Subjects	100
II Year 4 Semester	Core	13010319129	Dramaturgy and Technical Literature	100
	Core	13010319130	Ancient Indian History, Culture and Epigraphy	100
	Core	13010319131	Dissertation	200
			Total	1800

Select elective courses shall be offered

MASTER OF ARTS IN SOCIOLOGY

Course Code -010320

COURSE STRUCTURE

Year/Semester	Category	Paper Code	Title of the Paper	Max. Marks
I Year 1st Semester	Core	13010320101	Introduction to Sociology	100
	Core	13010320102	Perspectives of Indian Society-I	100
	Core	13010320103	Classical Sociological Theory	100
	Core	13010320104	Research Methodology-I	100
I Year 2nd Semester	Core	13010320105	Modern Sociological Theory	100
	Core	13010320106	Perspectives of Indian Society-II	100
	Core	13010320107	Research Methodology-II	100
	Core	13010320108	Sociology of Globalization	100
	Core	13010320109	Rural Sociology	100
II Year 3rd Semester	Elective Discipline Specific (Any Three)	13010320210	Gender Studies*	100
		13010320211	Sociology of Health*	100
		13010320212	Sociology of Environment*	100
		13010320213	Sociology of Movements	100
		13010320214	Sociology of Crime & Deviance	100
		13010320215	Sociology of NGOs	100
		13010320216	Sociology of Education	100
		13010320217	History of depressed class movement in India	100
		13010320218	Sociology of ageing	100
	Elective Free Discipline (Any Two)	13010320122	Organizational Behaviour*	100
		13010320123	Political Sociology*	100
		13010320124	Rural Development*	100
		13010320125	Disaster Management*	100
		13010320126	Freedom struggle/ National Movement*	100
II Year 4th Semester	Core	13010320119	Sociology of Development	100
	Core	13010320120	Urban Sociology	100
	Core	13010320121	Dissertation and Viva Voice	200
			Total	1800

Select elective courses shall be offered

MASTER OF ARTS IN SOCIAL WORK

Course Code-010326

COURSE STRUCTURE

Year/Semester	Category	Paper Code	Title of the Paper	Max. Marks
I Year /1st Semester	Core	13010326101	History and Field of Social Work	100
	Core	13010326102	Man and Society	100
	Core	13010326103	Human Growth and Development- Developmental Psychology	100
	Core	13010326104	Social Work Research and Statistics	100
I Year /2nd Semester	Core	13010326105	Social Work Methods	100
	Core	13010326106	Social Work Administration	100
	Core	13010326107	Social Problems, Social Policy, Social Legislation and Social Development	100
	Core	13010326108	Social Work with Weaker Section	100
	Core	13010326109	Concurrent field work	100
II Year 3rd Semester *These would be offered *These Would be OPffered	Elective Discipline Specific (Any Three)	13010326210	Labour Welfare *	100
		13010326211	Correctional Social Work	100
		13010326212	Basic concept of Management	100
		13010326213	History of Depressed Class Movement	100
		13010326214	Indian Public Administration	100
		13010326215	Organizational Behavior	100
		13010326216	Family and Child Welfare	100
		13010326217	Indian Society	100
		13010326218	Women in India*	100
		13010326219	Odishan Society	100
		13010326220	Basic of Urban Studies	100
		13010326221	Basic of Population Studies	100
		13010326222	Community Development*	100
	Elective Discipline Free (Any Two)	13010326126	Society and polity in India*	100
		13010326127	Development Administration*	100
		13010326128	Culture, politics and society in India*	100
		13010326129	Disaster management*	100
		13010326130	Freedom Struggle/ National Movement *	100
II Year/ 4th Semester	Core	13010326122	Social Exclusion and Development	100
	Core	13010326123	Human Right and duties	100
	Core	13010326125	Dissertation and Viva Voice	200
			Total	1800

Select elective courses shall be offered

MASTER OF COMMERCE

Course Code -030300

COURSE STRUCTURE

Year/ Semester	Subject	Paper Code	Title of the Paper				Max. Marks
I Year 1st Semester	Core	1330300101	Management Concepts and Practices				100
	Core	1330300102	Quantitative Methods for Management				100
	Core	1330300103	Business Economics & Environment				100
	Core	1330300104	Financial Management				100
I Year 2nd Semester	Core	1330300105	Corporate Financial Accounting				100
	Core	1330300106	Organization Behaviour				100
	Core	1330300107	Marketing Management				100
	Core	1330300108	Managerial Economics				100
	Core	1330300109	Entrepreneurship Development				100
II Year 3rd Semester	Specialization Group		Group-A	Group-B	Group-C	Group-D	
Any One Group- A/B/C/D	Elective Subject Discipline Any Three from Any one Group	1330300201	Advance Accounting	Financial Markets and Institution	Marketing Research & Consumer Behaviour	Human Resources Planning & Development	100
		1330300202	Accounting Information System	Merchant Banking & Financial Services	Marketing Services & Advertising management	Managing Employee Relation & Related Laws	100
		1330300203	Business Taxation	Security Analysis & Portfolio Management	Product & sales Management	Management of training & development	100
Any Two from Elective	Elective Discipline Free (Any Two)	1330300113	International Trade				100
		1330300114	Rural Development				100
		1330300115	Disaster Management				100
		1330300116	Development Administration				100
		1330300117	Indian Society				100
II Year 4th Semester	Core	1330300110	Banking and Insurance Management				100
	Core	1330300111	Research Methodology				100
	Core	1330300112	Dissertation				200
			Total				1800

Select elective courses shall be offered

REGULATION

DRAFT MODEL REGULATION FOR UNDER GRADUATE PROGRAMME (B.A/B.Com/B.Sc) UNDER CHOICE BEST CREDIT SEMESTER SYSTEM (APPLICABLE TO AUTONOMOUS COLLEGES/ AFFILIATED COLLEGES/DDCE)

1. DURATION

- 1.1 Three years of six semesters in toto.
- 1.2 Odd semester is from June to December (i.e., 1st, 3rd & 5th semester). The examination shall be held normally in the month of November - December.
- 1.3 Even semester is from January to June (i.e., 2nd, 4th & 6th semester). The examination shall be held normally in the month of April - May. However the Final Semester shall be conducted in early April and this result shall be published by end of May.
- 1.4 A student would be required to complete the course within six academic years (2015 - 2021) from the date of admission.
- 1.5 A student may opt for fast track of completing all the six semesters in two years provided s/he has at least 2 (two) years industry/organizational experience after +2. Such permission would be granted at the discretion of the Principal of the Autonomous Colleges and DDCE. This clause shall not be applicable to affiliated, non autonomous colleges.

2. CREDIT DISTRIBUTION		
A. THEORY PAPER		
Teaching Hours	Students input outside class	Credit Point
30 hours (3 classes per week for about +14 weej) 40 classes x 45 m =30 hours)	40-60 hours	3
20 hours	20-40 hours	1
B. PRACTICAL PAPER		
Teaching Hours	Students input outside class	Credit Point
60 hours	40-60 hours	3
40 hours	30-40 hours	2
30 hours	20-30 hours or below	1
C. DISSERTATION/ PROJECT PAPER		
Contact hour with the teacher	Students input outside class	Credit Point
20 hours	40 or more hours	8
D. SEMESTER- 90 DAYS OF TEACHING AND EVALUATION		
E. Minimum Credit Point required for Under Graduate Degree – 122		
F. DISTRIBUTION OF CREDIT POINTS		

Contact Hours per Week

	Tutorial	Practical	Project	Credit
3	1	0		3
4	0	0	0	3
		1 sessions of 4 hours each in a week out of which one hour is to be devoted to explanation by teacher		3
		Each Theory / Practical Paper would consist of 3 Units . We would enrich the paper at least by one unit (i.e 6 Units for 100 marks instead of 5 units) .	A student is expected to spend at least 100 hours for completion of the project. The teacher(supervisor) contact would be 10 to 20 hours.	8
Each paper would involve four classes per week for at least 15 weeks. In the first Semester due to delayed admission at least 12 weeks classes should be held. Number of teaching days should be 90 days per Semester. In the time table of the college, day one to six should be indicated, instead of Monday, Tuesday, Wednesday, Thursday, Friday and Saturday.				

REGISTRATION

REGISTRATION FOR 1ST SEMESTER IS COMPULSORY.

A candidate may take a blank Semester. A blank Semester has to be clubbed with next Odd or Even Semester as the case may be i.e. 2nd, 4th and 6th / 1st, 3rd and 5th . The Hostel policy for blank semester is to be decided by colleges as per their suitability. Hostel accommodation cannot be claimed as a right for a blank semester. (Blank semester is not to be confused as repetition due to failure).

75% attendance for non DDCE students is a requirement for being eligible to appear at Examination. Up to 15% waiver may be granted by the College Principal at discretion on Health Ground or participation in sports, cultural activities, NCC and NSS activities etc.

A student may clear backlog papers within 6 years. Improvement if any has to be completed within 4 years (i.e. for passed students).

A student may register for extra credit i.e. register for additional papers under the same faculty or outside the faculty under an autonomous college or DDCE provided they are in a position to facilitate such teaching.

3. WEIGHTAGE DISTRIBUTION (PERCENTAGE) FOR EVALUATION:

THEORY

		Quiz/Unit Test/Mid term	Presentation /Seminar	Term End	Total
		10+	10	80	100

PRACTICAL

Unit Test-I			Record	Term End	Total
10	-	-	10	80	100

DISSERTATION/ PROJECT

Identification of problem	Review of Literature	Methodology	Findings	Analysis	Viva-voce	Total
10	10	10	25	25	20	100

For the non autonomous colleges and DDCE unit tests , quizzes , presentation, seminar etc. may not be introduced immediately.

THEORY

Unit Test/Quiz/Seminar presentation	Term End	Total
10 +10	40 +40	100

4. GRADING SYSTEM

Grade		Mark Secured from 100	Points
Outstanding	'O'	100-90	10
Excellent	'E'	89-80	9
Very Good	'A'	79-70	8
Good	'B'	69-60	7
Fair	'C'	59-50	6
Pass	'D'	45-49	5
Failed	'F'	Below 30	0

N.B. A Candidate has to secure Grade -D or above to pass in each of the Papers

4.2 A transitory letter grade 1 (carrying points 2) shall be introduced for cases where the results are incomplete. This grade shall automatically be converted into appropriate grade(s) as and when the results are complete.

4.3 A student's level of competence shall be categorized by a GRADE POINT AVERAGE to be specified as :

SGPA - Semester Grade Point Average

CGPA - Cumulative Grade Point Average

(a) **POINT** - Integer equivalent of each letter grade

(b) **CREDIT** - Integer signifying the relative emphasis of individual course item(s) in a semester as indicated by the Course structure and syllabus.

CREDIT POINT - (b) X (a) for each course item

CREDIT INDEX - Σ **CREDIT POINT** of course items in

GRADE POINT AVERAGE - $\frac{\text{CREDIT INDEX}}{\Sigma \text{ CREDIT}}$

SEMESTER GRADE POINT AVERAGE (SGPA) = $\frac{\text{CREDIT INDEX}}{\Sigma \text{ CREDIT}}$ for a Semester

CUMULATIVE GRADE POINT AVERAGE(CGPA) =

$\frac{\text{CREDIT INDEX of all previous Semester upto a Semester}}{\Sigma \text{ CREDIT}}$

(c) A student in order to retain honours or major has to secure Grade 'C' and above in Major paper taken together. Further in order to obtain distinction a student has to secure Grade 'C' in all the papers(excluding repeat) .

4.4 The details of grading system under class 4.1 to 4.4 shall be printed on the backside of University Mark-sheet.

5. REPEAT EXAMINATION

5.1 A student has to clear back papers (i.e., in the paper/papers one has failed) by appearing at subsequent semester examinations within six years from the date of admission.

5.2 A student may appear improvement (repeat) in any number of papers in the immediate subsequent examination. The higher marks shall be retained.

5.3 Improvement has to be completed with 4-Yrs from the date of admission.

6. HARD CASE RULE

6.1 3% of grace mark on the aggregate mark (only in end semester theory paper) subject to maximum of 5 (five) marks in single paper shall be given. This shall be applicable in each semester.

6.2 0.5 (point five percent) grace mark can be given for award of B Grade in each semester in (major elective) provided grace mark under 7.1 has not been awarded.

7. EXAMINATION QUESTION PATTERN (SUGGESTIVE)

7.1 Distribution of marks for theory papers carrying 50 marks(40 +10 – mid term)

a. Two essay type carrying 10 marks out of five is to be answered. Model answers should be between 700 - 1000 words.

b. Two short type questions carrying 5 marks out of three is to be answered. Model answers should be between 150 - 250 words.

- c. Five objective type questions carrying 2 marks out of seven is to be answered. Model answers should be between one - two sentences.
8. **Each Dept shall have a designated Teacher in-charge of Examination to be decided by the Principal in addition to the Controller of Examinations of the College (applicable to autonomous colleges).**
9. **The Evaluation would be sole responsibility of Teacher offering the course (i.e. Setting & evaluating for Unit test / Quiz / Presentation or Seminar term end / Practical / Dissertation / Project etc.) (applicable to autonomous colleges).**
10. **Suitable modifications may be made by the Autonomous Colleges keeping in view the UGC Guideline for Autonomous Colleges , University Guidelines from time to time and State Govt. Guidelines from time to time.**

***BROAD PRINCIPLES OF CREDIT TRANSFER**

There should be a small group to consider all cases of credit transfer . The group should consists of the following

- Chairman - Chairman P.G Council (for University affiliated colleges) / Director, DDCE for DDCE/ Principals of the Autonomous College for their Colleges
- Convener - Dy. Controller of Examination for University affiliated colleges Faculty member of DDCE for DDCE, Controller of Examination of respective autonomous colleges for autonomous colleges.
- Members - Four teachers to be nominated by the Chairman, P.G. Council/ Director, DDCE/ Principal of Autonomous Colleges as the case may be.

Waiver for courses covered under other colleges notwithstanding differences in detailed course can be granted . Papers which one has not studied even though they are prescribed for earlier semesters can be covered by the students .

***OTHER BROAD PRINCIPLES**

- In science 50 % of the core science subject should cover theory . 25 % should cover practical's and projects and 25 % should cover problem solving and application.
- Out of 50 marks Term End examination should be for 40 marks . 10 marks should be spread over continuous evaluation distributed over one or two midterm and project seminar in case of autonomous colleges.
- All students would be required to opt for a hounours . However those securing less than 45 % may pass without honours . Provided they have secured pass mark i.e 30 % in each paper.
- Student transferred after 1st semester examination cannot be given position or medal under autonomous colleges. Students who have failed / remained absent / improve their marks by repetition shall not be eligible for University Gold medal or Rank. Students who have been granted credit waiver under credit transfer system can't be awarded Gold medal or position.

- 30 % in each paper be the pass mark . 2 % grace mark in each semester can be given subject to a maximum mark of 5 in a paper .
- For award of University Gold Medal, University shall form Committees with 2 P.G. Teachers and 2 UG Teachers for each subject for reevaluating the papers of First Class First Major students of Affiliated College / DDCE/ Autonomous colleges. Controller of Examination shall place the scripts by suitably coding such scripts after each semester. The Best Graduate would be decided from amongst the toppers of each major under a faculty. Details would be worked out by the Regulation Amending Committee under orders of the Vice Chancellor.

MODEL COURSE-CURRICULUM (+3 COMMERCE)							
			MAXIMUM MARKS	THEORY	I.M	EXAM HOURS	CREDITS ALLOTTED
SEMESTER-I							
CM 101	COMMUNICATIVE ENGLISH (C.E)		50	40	10	2	3
CM 102	FINANCIAL ACCOUNTING-I (F.A.I)		50	40	10	2	3
CM 103	BUSINESS ORGANISATION & MANAGEMENT (B.O. & M)		50	40	10	2	3
CM 104	STATISTICS FOR BUSINESS DECISION -I (S.B.D-I)		50	40	10	2	3
CM 105	BUSINESS LAW (B.L)		50	40	10	2	3
CM 106	FUNDAMENTAL OF ECONOMICS (F.E)		50	40	10	2	3
TOTAL	6 PAPER		300				18
SEMESTER-II							
CM 201	M.I.L / ALTERNATE ENGLISH (M.I.L /A.E)		50	40	10	2	3
CM 202	FINANCIAL ACCOUNTING-II(F.A. -II)		50	40	10	2	3
CM 203	INDIAL FINACIAL SYSYETM (I. F. S.)		50	40	10	2	3
CM 204	STATISTICS FOR BUSINESS DECISION -I (S.B.D-II)		50	40	10	2	3
CM 205	INDUSTRIAL LAW (I.L)		50	40	10	2	3
CM 206	ENTREPRENEURSHIP SKILL (E.S)		50	40	10	2	3
CM 207	COMPUTER APPLICATION & INFORMATION SYSTEM (C.A. & I.S)		50	40	10	2	3
TOTAL	7 PAPER		300				18
SEMESTER-III							
CM 301	INDIAN SOCIETY & CULTURE (I.S.&C)		50	40	10	2	3
CM 302	ELECTIVE-I	FINANCIAL LITERACY & INVESTMENT ADVISORY SERVICE (F.L. & I.A.S)	50	40	10	2	3
CM 303	ENTREPRENEURSHIP DEVELOPMENT (E.D)		50	40	10	2	3
CM 304	QUANTITATIVE & ANALYTICAL TECHNIQUES (Q & A.T)		50	40	10	2	3
CM 305	AUDITING (ADT.)		50	40	10	2	3
CM 306	HONOURS ELECTIVE (MAJOR)						
CM 306 (A)	ACCOUNTING	COST &MANAGEMENT ACCOUNTING (C.&M.A.)	100	80	20	3	6

CM 306 (B)	MANAGEMENT	ORGANISATIONAL BEHAVIOUR (O.B)	100	80	20	3	6
CM 306 (C)	BUSINESS I.T & FINANCE	BUSINESS ANALYSIS & DATA PROCESSING (B.A &D.P.)	100	80	20	3	6
CM 306 (D)	ENPREPRENEURSHIP DEVELOPMENT	ENTREPRENEURSHIP IN SMALL BUSINESS (E.S.B)	100	80	20	3	6
TOTAL	6 PAPER		350				21
SEMESTER-IV							
CM 401	ENVIRONMENTAL STUDIES (E.S)		50	40	10	2	3
CM 402	ELECTVE-II	ACCOUNTING & FINANCE FOR SMALL BUSINESS (A.& F.S.B)	50	40	10	2	3
CM 403	INCOME TAX-I (I.T-I)		50	40	10	2	3
CM 404	MARKETING MANAGEMENT (M.M)		50	40	10	2	3
CM 405	INTERNATIONAL BUSINESS (I.B)		50	40	10	2	3
CM 406	HONOURS ELECTIVE (MAJOR)						
CM 406 (A)	ACCOUNTING	CORPORATE ACCOUNTNG (C.A)	100	80	20	3	6
CM 406 (B)	MANAGEMENT	PRODUCTION MANAGEMENT (P.M)	100	80	20	3	6
CM 406 (C)	BUSINESS I.T & FINANCE	FINANCIAL SERVICES (F.S.)	100	80	20	3	6
CM 406 (D)	ENPREPRENEURSHIP DEVELOPMENT	SMALL PROJECT PREPARATION & ANALYSIS (S.P.P&A)	100	80	20	3	6
TOTAL	6 PAPER		350				21
SEMESTER-V							
CM 501	N.S.S / N.C.C / SPORTS / YOGA		50	40	10	2	3
CM 502	FUNDAMENTAL OF FINANCIAL MANAGEMENT (F.F.M)		50	40	10	2	3
CM 503	INCOME TAX-II (I.T-II)		50	40	10	2	3
CM 504	BUSINESS ECONOMICS (B.E)		50	40	10	2	3
CM 505	BUSINESS ENVIRONMENT(B.ENV)		50	40	10	2	3
CM 506	HONOURS ELECTIVE (MAJOR)						
CM 506 (A)	ACCOUNTING	ADVANCED ACCOUNTING (A.A)	100	80	20	3	6
CM 506 (B)	MANAGEMENT	BANK MANAGEMENT (B.M)	100	80	20	3	6
CM 506 (C)	BUSINESS I.T & FINANCE	ENTERPRISE RESOURCE PLANNING (E.R.P)	100	80	20	3	6
CM 506 (D)	ENPREPRENEURSHIP DEVELOPMENT	IT TOOLS & SOLUTIONS IN SMALL BUSINESS MANAGEMENT (I.T.&S.B.M)	100	80	20	3	6
TOTAL	6 PAPER		350				21

SEMESTER-VI						
CM 601	IT / SOFT SKILL DEVELOPMENT (S.S.D)		50	40	10	3
CM 602	INDIRECT TAX (I.D.T)		50	40	10	3
CM 603	PROJECT WORK (P.W) - Related to Commerce, Management, Finance, IT, Tax Etc.		PROJECT= 75 VIVA-25	–	–	8
CM 604	HONOURS ELECTIVE (MAJOR)					
CM 604(A)	ACCOUNTING	FINANCIAL STATEMENT ANALYSIS & REPORTING (F.S.A &R)	100	80	20	6
CM 604(B)	MANAGEMENT	HUMAN RESOURCES MANAGEMENT (H.R.M)	100	80	20	6
CM 604 (C)	BUSINESS I.T & FINANCE	MANAGEMENT OF FINANCIAL INSTITUTION (MFI)	100	80	20	6
CM 604 (D)	ENTREPRENEURSHIP DEVELOPMENT	ENTREPRENEURIAL COMPETENCIES (EC)	100	80	20	6
TOTAL	4 PAPER		350			21

The new system is planned to be introduced w.e.f. 2015-16. Changes shall be made by the University at implementation stage. The above structure and regulation is yet to be implemented.



MODEL FRAMEWORK OF +3 COURSE-CURRICULUM (SCIENCE / ARTS)							
			MAXIMUM MARKS	THEORY	I.M	EXAM HOURS	CREDITS ALLOTTED
SEMESTER-I							
SC 101	GENERAL / CORE	COMMUNICATIVE ENGLISH (C.G)	50	40	10	2	3
SC 102	MAJOR HONS.		50	40	10	2	3
SC 103	MAJOR HONS.		50	40	10	2	3
SC 104	MAJOR HONS.		50	40	10	2	3
SC 105	MINOR-I		50	40	10	2	3
SC 106	MINOR-II		50	40	10	2	3
TOTAL	6PAPER		300				18
SEMESTER-II							
SC 201	GENERAL / CORE	M.I.L / ALT. ENGLISH	50	40	10	2	3
SC 202	MAJOR		50	40	10	2	3
SC 203	MAJOR		50	40	10	2	3
SC 204	MAJOR		50	40	10	2	3
SC 205	MINOR-I		50	40	10	2	3
SC 206	MINOR-II		50	40	10	2	3
SC 207	MINOR-III		50	40	10	2	3
TOTAL	7PAPER		350				21
SEMESTER-III							
SC 301	GENERAL / CORE	INDIAN SOCIETY & CULTURE (I.S.C)	50	40	10	2	3
SC 302	ELECTIVE-I		50	40	10	2	3
SC 303	MAJOR		50	40	10	2	3
SC 304	MAJOR		50	40	10	2	3
SC 305	MAJOR		50	40	10	2	3
SC 306	MINOR-I		50	40	10	2	3
SC 307	MINOR-II		50	40	10	2	3
TOTAL	7PAPER		350				21
SEMESTER-IV							
SC 401	GENERAL / CORE	ENVIRONMENTAL STUDIES	50	40	10	2	3
SC 402	ELECTIVE-II		50	40	10	2	3
SC 403	MAJOR		50	40	10	2	3
SC 404	MAJOR		50	40	10	2	3
SC 405	MAJOR		50	40	10	2	3
SC 406	MINOR-I		50	40	10	2	3
SC 407	MINOR-II		50	40	10	2	3
TOTAL	7PAPER		350				21

SEMESTER-V							
SC 501	GENERAL / CORE	N.S.S / N.C.C / SPORTS / YOGA	50	40	10	2	3
SC 502	MAJOR		50	40	10	2	3
SC 503	MAJOR		50	40	10	2	3
SC 504	MAJOR		50	40	10	2	3
SC 505	MINOR-I		50	40	10	2	3
SC 506	MINOR-II		50	40	10	2	3
SC 507	MINOR-III		50	40	10	2	3
TOTAL	7PAPER		350				21
SEMESTER-VI							
SC 601	GENERAL / CORE	I.T / SOFT SKILL	50	40	10	2	3
SC 602	PROJECT WORK		PROJECT=75 VIVA-25	–	–	–	8
SC 603	MAJOR		50	40	10	2	3
SC 604	MAJOR		50	40	10	2	3
SC 605	MAJOR		50	40	10	2	3
TOTAL	5 PAPER		300				20

The new system is planned to be introduced w.e.f. 2015-16. Changes shall be made by the University at implementation stage. The above structure and regulation is yet to be implemented.



REGULATIONS FOR MBA AND P.G. DIPLOMA IN MANAGEMENT PROGRAMME (DISTANCE & EVENING)

1. DURATION

- 1.1 Two years of four semesters in toto.
- 1.2 Odd semester is from June to December (i.e., 1st & 3rd semester).
The examination shall be held normally in the month of November - December.
- 1.3 Even semester is from January to June (i.e., 2nd & 4th semester). The examination shall be held normally in the month of May - June.
- 1.4 A student would be required to complete the course within four academic years from the date of admission.
- 1.5 A student may opt for fast track of completing all the four semester in one year provided s/he has at least 2 (two) years industry / organizational experience and has passed a PG Diploma course in Management from a University or holds a PGDBM certificate from an AICTE approved institute or from IIM (s), XLRI and XIMB. (This would be allowed at the discretion of the Director, DDCE)

2. CONTACT HOUR

2.1 Under face to face Programme

- 2 credit points :- 20 hours,
- 3 credit points :- 30 hours,
- 4 credit points :- 40 hours,

2.2 Under Distance Mode

- 2 credit points :- 10 hours,
- 3 credit points :- 15 hours,
- 4 credit points :- 20 hours

3. GRADING SYSTEM

Grade		Mark Secured from 100	Points
Outstanding	'O'	100-90	10
Excellent	'E'	89-80	9
Very Good	'A'	79-70	8
Good	'B'	69-60	7
Fair	'C'	59-50	6
Pass	'D'	49-36	5
Failed	'F'	Below 36	0

N.B. A Candidate has to secure Grade -D or above to pass in each of the Papers

3.2 A transitory letter grade I (carrying points 2) shall be introduced for cases where the results are incomplete. This grade shall automatically be converted into appropriate grade(s) as and when the results are complete.

3.3 A student's level of competence shall be categorized by a GRADE POINT AVERAGE to be specified as :

SGPA - Semester Grade Point Average

CGPA - Cumulative Grade Point Average

(a) **POINT** - Integer equivalent of each letter grade

(b) **CREDIT** - Integer signifying the relative emphasis of individual course item(s) in a semester as indicated by the Course structure and syllabus.

CREDIT POINT - (b) X (a) for each course item

CREDIT INDEX - Σ **CREDIT POINT** of course items in

GRADE POINT AVERAGE - $\frac{\text{CREDIT INDEX}}{\Sigma \text{ CREDIT}}$

SEMESTER GRADE POINT AVERAGE (SGPA) = $\frac{\text{CREDIT INDEX}}{\Sigma \text{ CREDIT}}$ for a Semester

CUMULATIVE GRADE POINT AVERAGE (CGPA) =

$\frac{\text{CREDIT INDEX of all previous Semester upto a Semester}}{\Sigma \text{ CREDIT}}$

3.4 In addition to the points marks/percentage would also be awarded and shall also be reflected in the Mark Sheet.

3.5 The details of grading system under class 4.1 to 4.4 shall be printed on the backside of University Mark-sheet.

4. REPEAT AND IMPROVEMENT

4.1 A student has to clear back papers (i.e., in the paper/papers one has failed) by appearing at subsequent two semester examinations.

4.2 A student may appear improvement (repeat) in any number of papers in the immediate subsequent examination. Only one chance can be availed. The higher mark of the two chance (i.e., first and the improvement) shall be valid.

4.3 Repeat and improvement has to be completed with 4-Yrs from the date of admission.

5. HARD CASE RULE

- 5.1 2% of grace mark on the aggregate mark subject to maximum of 5 (five) marks in single paper shall be given. This shall be applicable in each semester.
- 5.2 .5 (point five percent) grace mark can be given for award of B Grade in each semester provided grace mark under 6.1 has not been awarded.

6. UNIVERSITY EXAM / PRACTICAL EXAM MARK DISTRIBUTION

- 6.1 Semester end University Examination shall be of 100 marks for all papers.
- 6.2 For papers involving practical the distribution shall be 50 Theory marks and 50 marks Practical.
- 6.3 The duration for 100 marks theory exam shall be 4 hours , for 50 marks theory exam duration shall be 2 hours.

7. UNIVERSITY EXAMINATION QUESTION PATTERN

- 7.1 There shall be three types of questions – Essay/Descriptive , short answer & objective. The following shall be the distribution for papers carry 100 marks.
 - a. Five essay type carrying 12 marks out of seven is to be answered. Model answers should be between 700 - 1000 words.
 - b. Four short type questions carrying 6 marks out of six is to be answered. Model answers should be between 150 - 250 words.
 - c. Eight objective type questions carrying 2 marks out of ten is to be answered. Model answers should be between one - two sentences.

7.2 Distribution of marks for theory papers carrying 50 marks

- a. Three essay type carrying 10 marks out of five is to be answered. Model answers should be between 700 - 1000 words.
- b. Two short type questions carrying 5 marks out of three is to be answered. Model answers should be between 150 - 250 words.
- c. Five objective type questions carrying 2 marks out of seven is to be answered. Model answers should be between one - two sentences.

8. COMMON QUESTIONS

Common question papers shall be set for common papers for MBA & All P.G. Diplomas. Common examination will be held.

- 9. Students admitted into P.G. Diploma Course and completing the course in the same academic year may get admitted into MBA in the next academic session. Such students shall enjoy waiver for the papers completed under P.G. Diploma course . This up-gradation shall be allowed within one year only. For example students admitted in 2009-10 academic session into P.G. Diploma courses have the choice of upgrading to MBA course in 2010-2011 academic session only. The marks secured in P.G.

Diploma Examination shall be transferred to MBA Examination for respective common papers. Such candidates shall surrender their provisional certificate and mark-sheets. Fresh mark-sheets for MBA would be issued.

10. Addition to the Regulation of **2006 & 2000** of DDCE Management Programme (i.e. MBA & PGDiplomas) . Wherever internal or college mark is not available the marks proportionate to the marks secured in that paper in the University examination shall be awarded to facilitate publication of result. All other clauses of respective regulation of 2000-2006 shall remain unchanged.



REGULATIONS FOR IMBA/BBA PROGRAMME

1. Duration :

- 1.1 Five years of ten semester in toto.
- 1.2 Odd semester is from June to December (i.e. 1st, 3rd , 5th,7th, 9th semester).
The examination shall be held in tentatively the month of December.
- 1.3 Even semester is from January to May (i.e. 2nd, 4th, 6th, 8th, 10th semester). The examination shall be held in tentatively the month of June.
- 1.4 A student would be required to complete the course within eight academic years from the date of admission.

2. Contact Hour :

- 2.1 Under Personal Contact Programme,
 - 2 credit points :- 10 hours,
 - 3 credit points :- 15 hours,
 - 4 credit points :- 20 hours,

3. Grading System :

3.1. Grade Mark Secured from 100 Points

Qustanding	'O'	100-90	10
Excellent	'E'	89-80	9
Very Good	'A'	79-70	8
Good	'B'	69-60	7
Fair	'C'	59-50	6
Pass	'D'	49-36	5
Failed	'F'	Below 36	0

N.B. A Candidate has to secure Grade -D or above to pass in each of the Papers

- 3.2. A transitory letter grade I (carrying points 2) shall be introduced for cases where the results are incomplete. This grade shall automatically be converted into appropriate grade(s) as and when the results are complete.
- 3.3 A student's level of competence shall be categorized by a GRADE POINT AVERAGE to be specified as :
SGPA - Semester Grade Point Average
CGPA - Cumulative Grade Point Average
 - (a) POINT - Integer equivalent of each letter grade

- (b) CREDIT- Integer signifying the relative emphasis of individual course item(s) in a semester as indicated by the Course structure and syllabus.

CREDIT POINT - (b) X (a) for each course item

CREDIT INDEX - $\frac{\text{CREDIT POINT}}{\text{CREDIT}}$ of course items in

GRADE POINT AVERAGE - $\frac{\text{CREDIT INDEX}}{\text{CREDIT}}$

$\frac{\text{CREDIT INDEX}}{\text{CREDIT}}$

SEMESTER GRADE POINT AVERAGE (SGPA) = $\frac{\text{CREDIT INDEX}}{\text{CREDIT}}$ for a Semester

CUMULATIVE GRADE POINT AVERAGE(CGPA) = $\frac{\text{CREDIT INDEX of all previous Semester upto a Semester}}{\text{CREDIT}}$

3.4 In addition to the points marks / percentage would also be awarded and shall also be reflected in the Mark Sheet.

3.5 After successfully completion of the first six semester examination students would awarded Bachelor Degree in Business Administration In addition to grade specified at para 4.1 Class / Division shall be awarded at BBA level as follows :

36% and above but less than 45%	: Pass without Hons.
45% and above but less than 50%	: 2nd Class Hons.
50% and above but less than 60%	: 2nd Class Hons with Distinction.
60% and above	: 1st Class Hons with Distinction.

(However in case Distinction student has to secure the above average percentage of mark in the six semesters in one / first chance)

4. Repeat and Improvement :

4.1 A student has to clear back papers (i.e. in the paper/papers one has failed) by appearing at subsequent three semester examinations.

4.2 A student may appear improvement in any paper / papers in the immediate subsequent examination. Only one chance can be availed. The higher mark of the two chance (i.e. first and the improvement) shall be valid.

5 Hard Case Rule :

5.1 1% of grace mark on the aggregate mark subject to maximum of 3 (three) marks in single paper taking aggregate as a subject shall be given. This shall be applicable in each semester.

MASTER OF COMPUTER APPLICATION (3 Yr) Course Code – 20304

MASTER OF COMPUTER APPLICATION (2 Yr) Course Code – 20704

MASTER OF SCIENCE IN COMPUTER SCIENCE Course Code – 20312

MASTER OF SCIENCE IN INFORMATION TECHNOLOGY

Course Code – 20313

**MASTER OF SCIENCE IN INFORMATION TECHNOLOGY &
MANAGEMENT Course Code – 20314**

UNDER CBCS (With effect from 2014)

**WE DO NOT PROVIDE ANY PLACEMENT ASSISTANCE. STUDENTS GET
EMPLOYED THROUGH SELF INITIATIVES.**

Course Structure (Course is under revision)

EFFECTIVE FROM 2014 – 15 ACADEMIC SESSIONS IN REGULAR MODE

FIRST SEMESTER (9 Papers)

PAPER	SUBJECT	FULL MARK	L – T – P	CREDIT
CS 1.1	Introduction to Information Technology	100	3-1- 0	4
CS 1.2	Programming Logic & C Programming	100	3-1- 0	4
CS 1.3	Discrete Mathematics	100	3-1- 0	4
CS 1.4	Probability & Statistics	100	3-1- 0	4
<i>Any two from followings (CS 1.5 & CS 1.6)</i>				
1.	Accounting & Financial Management	100	3-1- 0	4
2.	Principles of Management	100	3-1- 0	4
3.	Business & Communicative English	100	3-1- 0	4
4.	Editing Skills	100	3-1- 0	4
CS 1.7	Practical - I	50	0-0-6	4
CS 1.8	Practical - II	50	0-0-6	4
CS 1.9	Practical - III	50	0-0-6	4
TOTAL 750				36

SECOND SEMESTER (9 Papers)

PAPER	SUBJECT	FULL MARK	L – T – P	CREDIT
CS 2.1	DATA STRUCTURE	100	3-1- 0	4
CS 2.2	Digital circuit & Logic Design	100	3-1- 0	4
CS 2.3	Object Oriented Programming using C++	100	3-1- 0	4
CS 2.4	Quantitative Techniques	100	3-1- 0	4
CS 2.5	Numerical Analysis	100	3-1- 0	4
<i>Any One from followings (CS 2.6)</i>				
1.	Organisational Behaviour	100	3-1- 0	4
2.	Business Economics	100	3-1- 0	4
3.	Marketing Management	100	3-1- 0	4
CS 2.7	Practical - I	50	0-0-6	4
CS 2.8	Practical - II	50	0-0-6	4
CS 2.9	Practical - III	50	0-0-6	4
TOTAL 750				36

THIRD SEMESTER (9 Papers)

PAPER	SUBJECT	FULL MARK	L – T – P	CREDIT
CS 3.1	Operating System	100	3-1- 0	4
CS 3.2	Data Communication & Computer Networks	100	3-1- 0	4
CS 3.3	Microprocessor & Assembly Language Programming	100	3-1- 0	4
CS 3.4	Database Management System	100	3-1- 0	4
CS 3.5	Computer Architecture	100	3-1- 0	4
CS 3.6	Theory of Computation	100	3-1- 0	4
CS 3.7	Practical - I	50	0-0-6	4
CS 3.8	Practical - II	50	0-0-6	4
CS 3.9	Practical - III	50	0-0-6	4
TOTAL 750				36

FOURTH SEMESTER (9 Papers)

PAPER	SUBJECT	FULL MARK	L – T – P	CREDIT
CS 4.1	Software Engineering	100	3-1- 0	4
CS 4.2	Artificial Intelligence	100	3-1- 0	4
CS 4.3	Internet & Java Programming	100	3-1- 0	4
CS 4.4	Computer Graphics	100	3-1- 0	4
CS 4.5	Combinatorics & Graph Theory			
CS 4.6	Advance Computer Network	100	3-1- 0	4
CS 4.7	Practical - I	50	0-0-6	4
CS 4.8	Practical - II	50	0-0-6	4
CS 4.9	Practical - III	50	0-0-6	4
TOTAL 750				36

FIFTH SEMESTER (9 Papers)

PAPER	SUBJECT	FULL MARK	L – T – P	CREDIT
CS 5.1	Data mining & Data Warehousing	100	3-1- 0	4
CS 5.2	Analysis & Design of Algorithms	100	3-1- 0	4
CS 5.3	Compiler Design	100	3-1- 0	4
For MCA Students (CS 5.4, CS 5.5, CS 5.6) (Any Three from the followings)				
1.	Distributed Systems	100	3-1- 0	4
2.	Parallel Computing	100	3-1- 0	4
3.	Digital Image Processing	100	3-1- 0	4
4.	Computer Network Security	100	3-1- 0	4
5.	Web Engineering	100	3-1- 0	4
For M.Sc. (Computer Science) Students (CS 5.4, CS 5.5, CS 5.6) (Any Three from the followings)				
1.	Realtime Systems	100	3-1- 0	4
2.	Soft Computing	100	3-1- 0	4
3.	Client Server Computing	100	3-1- 0	4
4.	Computer Vision	100	3-1- 0	4
5.	Bioinformatics	100	3-1- 0	4
For MIT / M.Sc. (IT / ITM) Students (CS 5.4, CS 5.5, CS 5.6) (Any Three from the followings)				
1.	Computer Network Security	100	3-1- 0	4
2.	Embedded System	100	3-1- 0	4
3.	Cloud Computing	100	3-1- 0	4
4.	Mobile Computing	100	3-1- 0	4
5.	Pattern Recognition	100	3-1- 0	4
CS 5.7	Practical - I	50	0-0-6	4
CS 5.8	Practical - II	50	0-0-6	4
CS 5.9	Practical - III	50	0-0-6	4
CS 5.10	Pre Placement Techniques (Non Credit)			
TOTAL 750				36

SIXTH SEMESTER (PROJECT WORK FOR 16 WEEKS)**

PAPER	SUBJECT	FULL MARK	L – T – P	CREDIT
CS 6.1	Grand Viva	100		4
	Dissertation / Project & Presentation	300		8
	TOTAL	400		12

** There will be a 16 weeks project work to be undertaken by the students in any Industry / Institution. At the end of the project there will an evaluation of the project for 12 credits by an External & Internal Examiner .

Those who have not passed Mathematics / Statistics at +2 Level have to pass a Bridge Course consisting of two +2 Level Mathematics Course (Non Credit).

BRIDGE COURSE

PAPER	SUBJECT	FULL MARK	L – T – P	CREDIT
CS B.1	Mathematical Foundation for Computer Science - I	100	40 Hours	
CS B.2	Mathematical Foundation for Computer Science - II	100	40 Hours	

The examination for the above Non Credit papers shall be conducted during first and / or second semester of MCA Programme.



MODEL REGULATION FOR POST GRADUATE PROGRAMME DDCE

1. DURATION

- 1.1 At least two years of four semester in toto. In case of professional courses the duration may be more.
- 1.2 Odd semester is from June to December (i.e., 1st & 3rd semester). The examination shall be held normally in the month of November - December.
- 1.3 Even semester is from January to June (i.e., 2nd & 4th semester). The examination shall be held normally in the month of May - June.
- 1.4 A student would be required to complete the course within four academic years from the date of admission.

2. CREDIT DISTRIBUTION

A. THEORY PAPER

Teaching Hours	Students input outside class	Credit Point
40 hours	80-100 hours	4
30 hours	40-60 hours	3
20 hours	20-40 hours	1

B. PRACTICAL PAPERS

Teaching Hours	Students input outside class	Credit Point
40 hours	30-40 hours	3
30 hours	20-30 hours	2
20 hours	10-20 hours	1

C. DISSERTATION PAPER

Contact hour with the teacher	Students input outside class	Credit Point
20 hours	100 or more hours	4

D. SEMESTER- 90 DAYS OF TEACHING AND EVALUATION

E. MINIMUM CREDIT POINT REQUIRED FOR POST GRADUATE DEGREE - 72

F. DISTRIBUTION OF CREDIT POINTS

Hard core course	Core Elective Courses	Allied Elective Courses	Free Elective Courses	Audit Courses
32	16	16	08	16

- ◆ **Hard core courses** are to be pursued from the P.G. Department where a student has taken admission (Compulsory courses)
- ◆ **Core Elective Courses** are to be pursued from the P.G. Department where a student has taken admission (Special Paper course)
- ◆ **Allied Elective courses** can be pursued from allied department. Each P.G. Department would prepare the list of allied departments.
- ◆ **Free Elective** courses can be pursued in any P.G. Department or from DDCE, University Law College or such other educational institution to be decided by the P.G. Council. The student may pursue such course in his own department also.
- ◆ **Audit courses** are those which the student pursues under any department without opting to go through any examination in any P.G. Department or from DDCE, University Law College or such other educational institution to be decided by the P.G. Council. No credit would be awarded for audit courses. However the certificate shall specify course completion. In case the student opts to go through examination process credit shall be assigned, but shall not be taken into account for awarding cumulative grade point average.

3.1 GRADING SYSTEM

Grade		Mark Secured from 100	Points
Outstanding	'O'	100-90	10
Excellent	'E'	89-80	9
Very Good	'A'	79-70	8
Good	'B'	69-60	7
Fair	'C'	59-50	6
Pass	'D'	49-36	5
Failed	'F'	Below 36	0

N.B. A Candidate has to secure Grade -D or above to pass in each of the Papers

- 3.2 A transitory letter grade I (carrying points 2) shall be introduced for cases where the results are incomplete. This grade shall automatically be converted into appropriate grade(s) as and when the results are complete.
- 3.3 A student's level of competence shall be categorized by a GRADE POINT AVERAGE to be specified as :

SGPA -Semester Grade Point Average

CGPA -Cumulative Grade Point Average

- (a) **POINT** - Integer equivalent of each letter grade
- (b) **CREDIT** - Integer signifying the relative emphasis of individual course item(s) in a semester as indicated by the Course structure and syllabus.

CREDIT POINT - (b) X (a) for each course item

CREDIT INDEX - Σ **CREDIT POINT** of course items in

GRADE POINT AVERAGE -
$$\frac{\text{CREDIT INDEX}}{\Sigma \text{ CREDIT}}$$

SEMESTER GRADE POINT AVERAGE (SGPA) =
$$\frac{\text{CREDIT INDEX}}{\Sigma \text{ CREDIT}}$$
 for a Semester

CUMULATIVE GRADE POINT AVERAGE (CGPA) =

$$\frac{\text{CREDIT INDEX of all previous Semester upto a Semester}}{\Sigma \text{ CREDIT}}$$

3.4 In addition to the points marks/percentage would also be awarded and shall also be reflected in the Mark Sheet.

3.5 The details of grading system under class 4.1 to 4.4 shall be printed on the backside of University Mark-sheet.

4. REPEAT EXAMINATION

4.1 A student has to clear back papers (i.e., in the paper/papers one has failed) by appearing at subsequent two semester examinations.

4.2 A student may appear improvement (repeat) in any number of papers in the immediate subsequent examination. The higher marks shall be retained.

4.3 Repeat and improvement has to be completed with 4-Yrs from the date of admission. In case of three year duration, the course may be completed within 5 years.

4.4 There shall not be any distinction between repeat and improvement.

5. HARD CASE RULE

5.1 2% of grace mark on the aggregate mark subject to maximum of 5 (five) marks in single paper shall be given. This shall be applicable in each semester.

5.2 .5 (point five percent) grace mark can be given for award of B Grade in each semester provided grace mark under 6.1 has not been awarded.

6. EXAMINATION QUESTION PATTERN (SUGGESTIVE)

6.1 There shall be three types of questions – Essay/Descriptive, short answer & objective.

The following shall be the distribution for papers carry 100 marks.

a. Five essay type carrying 12 marks out of seven is to be answered. Model answers should be between 700 - 1000 words.

- b. Four short type questions carrying 6 marks out of six is to be answered. Model answers should be between 150 - 250 words.
 - c. Eight objective type questions carrying 2 marks out of ten is to be answered. Model answers should be between one - two sentences.
- 6.2 Distribution of marks for theory papers carrying 50 marks
- a. Three essay type carrying 10 marks out of five is to be answered. Model answers should be between 700 - 1000 words.
 - b. Two short type questions carrying 5 marks out of three is to be answered. Model answers should be between 150 - 250 words.
 - c. Five objective type questions carrying 2 marks out of seven is to be answered. Model answers should be between one - two sentences.
7. In case of P.G. Dept. M.S. Law College the teacher offering the course shall be responsible completely for the evaluation (setting papers, conducting unit test, term end test, seminars, presentation, guidance of dissertations and projects etc.).
 8. The Departmental Teacher Council, Teacher Council of P.G. Dept. of Law & M.S. Law College and teacher Council of DDCE along with concerned Heads of P.G. Depts. of the University shall act as the Board of Study for the courses offered. They may invite external members.
 9. Each Dept shall have a designated Teacher in-charge of Examination to be decided by the Head, Principal, or Director as the case may be.
 10. The Evaluation would be sole responsibility of Teacher offering the course (i.e. Setting & evaluating for Unit test / Quiz / Presentation or Seminar term end / Practical / Dissertation / Project etc.)
 11. The Dept. Law College, DDCE shall prepare the result and handover the same (Tabulation Register.) to Controller of Examinations (both soft & hard) for preparation of certificates and mark sheets. The Head of the Dept. / Principal, Director may issue Mark sheet cum Provisional result sheet to the candidates.
 12. Suitable modifications may be made for P.G. Courses offered by the DDCE, Utkal University under approval of its Advisory Council and the Vice Chancellor.

EXAMINATION SYSTEM

The DDCE, Utkal University is a constituent college of the Utkal University. All Degree / Diploma Examinations are conducted by the Controller of Examinations, Utkal University. Normal examination schedule has been indicated in the Academic Calendar (Pg 76). The Controller of Examinations, Utkal University publishes a general schedule of all University Examinations in leading local dailies. The detailed Program of various examinations are also communicated to all affiliated colleges of the University. DDCE shall be the Centre of Examination for all courses. For BA/B.Com additional centres operate.

Centres of Examination are indicated along with the course details. The Controller of Examinations and the Director, DDCE at their discretion may change the centre of examination of any student. At the time of admission, the students are **required to fill up their examination forms online**. They are required to deposit the Examination Fees as per instruction from DDCE. For all other examinations, forms are filled up online six months before the scheduled date. Before the commencement of the examination, the DDCE issues admit card specifying centre of examination online. Student is required to download the same. In case of any discrepancy, the student is required to report to the DDCE in person. Change of examination centre is allowed only on the event of the death of parent/legal guardian and/ or Transfer of self or parents. Besides the usual fees payable to the University, a student has to pay a sum of Rs. 100/- to the DDCE for centre change. Such request will be entertained one month before the commencement of the examination. Permission for change of centre is given purely on the discretion of the Director, DDCE and/or Controller of Examinations, Utkal University. A student has to carry the DDCE Identity Card to the centre of examination.

Candidates, who are booked under malpractice have to fill-up the repeat exam. form with an undertaking without waiting for the award of punishment. Candidates who have marked absent even when they have appeared examination are also advised to repeat the examination pending location at marks/scripts.

Arrangement for down loading admits card has been introduced. Please visit www.ddceutkal.ac.in. Arrangement for Online form fill up is under process. **PLEASE NOTE DDCE WOULD NOT ISSUE** any individual communication regarding examination. **PLEASE DOWNLOAD ADMIT CARD & PROGRAMME.**

CENTRES FOR EXAMINATION

Course	Name of the Centers
BA/B.Com	A.S COLLEGE, TIRTOL B.B. MOHAVIDYALAYA, CHANDIKHOLE CHOUDWAR COLLEGE, CHOUDWAR DHARMASALA MOHAVIDYALAYA, DHARMASALA Directorate of Distance & Continuing Education, Utkal University G.M. LAW COLLEGE, PURI H.N.S. COLLEGE, CHANDOLA MANGALA MAHAVIDYALAYA, KAKATAPUR MOHAN SUBUDHI DEGREE COLLEGE, BARAMBA NAYAGARH PRAJAMANDAL MAHILA (DEGREE) MAHAVIDYALAYA, NAYAGARH P.S.S.J. COLLEGE, BANARPAL R.S.(DEGREE) MAHAVIDYALAYA, ODAGAON THE LAW COLLEGE, CUTTACK TULASI WOMEN'S COLLEGE, KENDRAPARA WOMEN'S COLLEGE, KHURDA
Other than B.A./B.Com.	DDCE SHALL BE THE CENTRE

NOTE FOR PHYSICALLY CHALLENGED

In case of physically challenged person/ students special facilities are extended by the COE at his discretion

1. Additional 30 minutes time is allowed. In case of writing inability (particularly blind/disability in hand etc.) and a writer can be engaged. Physically challenged students have to produce I. Card from State Social Welfare Board. The writer must be pursuing a lower course (for example B.A. candidates are to engage a writer, who is a student at +2 or for M.A. one who is a student of +3), in a recognized college under CHSE/University etc. it is the responsibility of the candidate to identify a writer and apply in the COE, Utkal University for approval at the centre through the Director DDCE. The application must be submitted at least a fortnight before the commencement of examination with the photocopy of physically disabled certificate issued by CDMO. Without prior approval no writer will be allowed. In rare of rarest case COE may give permission to an alternate writer.
2. The candidate is to carry the original physically disabled certificate during the examination and has to produce if asked by the Centre Superintend.
3. In case of Blind Candidates separate seats will be arranged both for the scribe and the examinee. The Scribe is not allowed to take any material inside the exam hall.

CERTIFICATION

The University Registration Number is issued by the DDCE on behalf of the Controller of Examinations, Utkal University. Students passing out the qualifying examination from Boards other than C.H.S.E., Orissa and OSTEC are required to submit Migration Certificate along with the application form. Migration Certificate is issued by the Controller of Examinations, Utkal University on payment of prescribed fees and the application form are to be deposited for obtaining the same.

Provisional Certificates and Mark Sheets are issued by the Controller of Examinations. After publication of result, DDCE would dispatch these along with the C.L.C. by registered post to the concerned student. Issuance of C.L.C, is always subject to clearance of all dues. Original Degrees/ Diplomas are issued by the Controller of Examinations. One may download mark sheet from our website.

Students discontinuing before completion of any course are to apply for C.L.C. in prescribed forms, to the DDCE.

DUPLICATE REGISTRATION NO., CLC & IDENTITY CARD

For duplicate Registration Number a candidate is to pay Rs. 70/-. For duplicate CLC an affidavit before a first class magistrate is required and a fee of Rs. 200/- is to be paid.

Identity Card will be issued to the student on completion of admission process. Duplicate Identity Card will be issued on payment of Rs. 50/-. If a student applies for CLC after 5 Years from the normal duration of the course he/she has to deposit Rs.500/- and produce an affidavit with all relevant information / declaration.

ACADEMIC CALENDAR 2015-2016

Course	Semester/ Year	Contact Class		Examination Schedule(Tentative)
BA/ B.Com		From	To	
BA /B.com 3rd year	2014 admission Batch	13.07.15	22.07.15	Feb-2016
BA /B.com 2nd year	2013 admission Batch	23.07.15	01.08.15	Mar-2016
Educational Practical (Pass & Hons- 2nd & 3rd yr.)	2013 & 14 admission Batch	17.08.15	21.08.15	
BA / B.Com 1st Semester	2015 Admission Batch	21.09.15	30.09.15	January-2016
BA / B.Com 2nd Semester	2015 Admission Batch	16.01.16	25.01.16	April- May 2016
MA/M.Com/MSW				
MA/M.Com/MSW (3rd Semester)	2014 Admission Batch	03.08.15	12.08.15	Jan-2016
MA/M.Com/MSW (1st Semester)	2015 Admission Batch	07.09.15	16.09.15	
MA/M.Com/MSW (4th Semester)	2014 Admission Batch	27.01.16	31.01.16	July-2016
MA/M.Com/MSW (2nd Semester)	2015 Admission Batch	09.02.16	18.02.16	
Management Programme				
IMBA / BBA 3rd & 5th Semester	2014/2013 Admission Batch	13.07.15	22.07.15	Nov-Dec 2015
IMBA 7th & 9th Semester	2012/2011 Admission Batch	23.07.15	01.08.15	
MBA 3rd Semester	2014 Admission Batch	17.08.15	25.08.15	
IMBA/ BBA & All PG Diploma 1st Semester	2015 Admission Batch	26.08.15	06.09.15	
MBA 1st Semester	2015 Admission Batch	21.09.15	03.10.15	
SSDC & Yoga for MBA/IMBA/PGDIP/BBA	2015 Admission Batch	29.10.15	07.11.15	
BBA/IMBA 2nd,4th & 6th Semester	2015/14/13 Admission Batch	04.01.16	13.01.16	May-June 2016
IMBA 8th & 10th Semester	2012/2011 Admission Batch	13.01.16	22.02.16	
MBA 2nd Semester	2015 Admission Batch	27.01.16	08.02.16	
MBA 4th semester & All Pg Dip 2nd Sem.	2014/2015 Admission Batch	19.02.16	29.02.16	

- ◆ Classes of Regular Face to Face Mode Courses would be notified in our Notice Board. MBA Evening classes would be held from Monday through Saturday from 6.00 p.m. to 9. p.m.
- ◆ PGDBIM Classes would be held from 8.00 a.m. to 11.00 a.m. And from 12.00 noon to 2.00 p.m. from Monday to Saturday.
- ◆ MCA Classes would be held from 7.00 a.m. to 12.30 p.m. from Monday to Saturday.
- ◆ Usual Puja Holidays and Summer Vacation shall also be applicable for regular courses.

CONTACT CLASSES

Course	Semester/ Year	Contact Class	
		From	To
BA/ B.Com			
BA /B.Com3rd year	2014 admission Batch	13.07.15	22.07.15
BA /B.Com2nd year	2013 admission Batch	23.07.15	01.08.15
Educational Practical (Pass & Hons-2nd & 3rd yr.)	2013 & 14 admission Batch	17.08.15	21.08.15
BA / B.Com 1st Semester	2015 Admission Batch	21.09.15	30.09.15
BA / B.Com 2 nd Semester	2015 Admission Batch	16.01.16	25.01.16
MA/M.Com/MSW			
MA/M.Com/MSW (3rd Semester)	2014 Admission Batch	03.08.15	12.08.15
MA/M.Com/MSW (1st Semester)	2015 Admission Batch	07.09.15	16.09.15
MA/M.Com/MSW (4th Semester)	2014 Admission Batch	27.01.16	31.01.16
MA/M.Com/MSW (2 nd Semester)	2015 Admission Batch	09.02.16	18.02.16
Management Programme			
IMBA / BBA 3rd & 5th Semester	2014/2013 Admission Batch	13.07.15	22.07.15
IMBA 7th & 9th Semester	2012/2011 Admission Batch	23.07.15	01.08.15
MBA 3rd Semester	2014 Admission Batch	17.08.15	25.08.15
IMBA/ BBA & All PG Diploma 1st Semester	2015 Admission Batch	26.08.15	06.09.15
MBA 1st Semester	2015 Admission Batch	21.09.15	03.10.15
SSDC & Yoga for MBA/IMBA/PGDIP/BBA	2015 Admission Batch	29.10.15	07.11.15
BBA/IMBA 2nd,4th & 6th Semester	2015/14/13 Admission Batch	04.01.16	13.01.16
IMBA 8th & 10th Semester	2012/2011 Admission Batch	13.01.16	22.02.16
MBA 2nd Semester	2015 Admission Batch	27.01.16	08.02.16
MBA 4th semester & All Pg Dip 2nd Sem.	2014/2015 Admission Batch	19.02.16	29.02.16

All classes are held at DDCE. Exact TimeTable shall be hoisted in our website. There may be last minute changes under unavoidable circumstances.

BROAD EXAMINATION SCHEDULE

Course	Semester/ Year	Tentative Timeline
BA/ B.Com		
BA /B.Com3rd year	2014 admission Batch	February-2016
BA /B.Com2nd year	2013 admission Batch	March- 2016
BA / B.Com 1st Semester	2015 Admission Batch	January-2016
BA / B.Com 2nd Semester	2015 Admission Batch	April-May-2016
MA/M.Com/MSW		
MA/M.Com/MSW (3rd Semester)	2014 Admission Batch	January-2016
MA/M.Com/MSW (1st Semester)	2015 Admission Batch	
MA/M.Com/MSW (4th Semester)	2014 Admission Batch	July-2016
MA/M.Com/MSW (2nd Semester)	2015 Admission Batch	
Management Programme		
IMBA / BBA 3rd & 5th Semester	2014/2013 Admission Batch	November-December-2015
IMBA 7th & 9th Semester	2012/2011 Admission Batch	
MBA 3rd Semester	2014 Admission Batch	
IMBA/ BBA & All PG Diploma 1st Semester	2015 Admission Batch	
MBA 1st Semester	2015 Admission Batch	
SSDC & Yoga for MBA/IMBA/PGDIP/BBA	2015 Admission Batch	
BBA/IMBA 2nd,4th & 6th Semester	2015/14/13 Admission Batch	May-June-2016
IMBA 8th & 10th Semester	2012/2011 Admission Batch	
MBA 2nd Semester	2015 Admission Batch	
MBA 4th semester & All Pg Dip 2nd Sem.	2014/2015 Admission Batch	

Exact shedule of Examinations & Form fillup would be notified in our website. Online examinaiton form fillup has been introduced. Candidates are required to download their Admit Card, Provisional result and Marks Sheet etc. from our website: www.ddceutkal.ac.in.

GENERAL & EXAMINATION INSTRUCTIONS

- ◆ We do not send information on Schedule of Examination by post. One has to visit our website for all the notices.
- ◆ DDCE shall not be responsible for any postal delay.
- ◆ Telephonic enquiry cannot be treated as authentic. Notices in web and variations in web are only authentic.
- ◆ Fees once deposited cannot be refunded.
- ◆ We do not provide any Hostel Accommodation.
- ◆ We do not provide placement service.
- ◆ We do not lend books from our Library.
- ◆ We do not provide any travel concession.
- ◆ We do not provide entire course material. For language and literature subject student is required to procure the prescribed text. Partly course material is placed in our website. In place of printed material we provide at times DVDs/ CDs.
- ◆ Our students do not receive any scholarship or stipend from Govt. Agency.
- ◆ Course Fees are not reimbursable from any other source.
- ◆ DDCE Utkal University has been inspected by a joint team of UGC-AICTE-DEC in January 2013 and it stands recognized. Renewal is due in 2016 and the process has been initiated.
- ◆ For update student must visit www.ddceutkal.ac.in.
- ◆ The last Date for depositing the readmission fees is 31st July every year. If the last Date is holiday then the next day one can deposit the fees without fine. No notice shall be issued for this.
- ◆ Fees deposited after the Due date the candidate has to pay Rs. 500/- in addition to the readmission fees.
- ◆ Please note that DDCE remains closed on all public holidays including every second Saturday of the month and all Sundays. We follow the Utkal University Holiday List (for its office).
- ◆ 2015 Calendar has been printed in this Brochure please note that under the order of the Vice-Chancellor additional Holidays are declared.

- ◆ No additional sheet shall be provided. Your answer should be precise, to the point and you must use space judiciously. Additional margins must not be used. Your handwriting should be legible.
- ◆ No temporary absence is allowed during the first hour. For 3hr. duration exam only 1 (max) and for a 4hr. duration exam only 2 (max) temporary absence is allowed. You must not carry answer script or question paper outside the hall under any circumstances. Temporary absence beyond 5 minutes is not allowed. Temporary absence is permitted by the invigilator.
- ◆ No examinee should carry anything to the hall except pen, pencil, eraser, I- card, Admit card, permission letter, non- scientific calculator (where allowed), scale, purse, sharpener and refills. Carrying MOBILE PHONE OR ANY OTHER GADGET is strictly prohibited. DDCE has no arrangement for safe keeping of your mobiles. Placing mobiles / bags etc at a common identified place is at your own risk. DDCE shall bear no responsibility for theft etc.
- ◆ Please park your two wheelers / other vehicles at designated place only. Parking at DDCE is at owner's risk. You are advised to double lock your vehicles. DDCE shall bear no responsibility for the safe keeping of vehicles. Number of Thefts have been reported in past.
- ◆ Physically challenged / Differently abled/Nursing mother/ pregnant women etc. who require special arrangement need to apply to Controller of Examination (COE) at least 15 days before the commencement of examination. In case of a writer being engaged, complete details of the writer including ID Proof and highest educational qualification etc. are to be provided and this needs to be approved by the director DDCE and controller of examination, Utkal University. DDCE shall not take any responsibility unless all formalities are completed as above. In case of multiple writers, the details of scribe are also to be produced. Writers should be students pursuing a lower course.
- ◆ Examinees are subject to physical check up by officials both at the gate and in the examination hall.
- ◆ Indiscipline in any form and malpractice in any form shall be seriously viewed.
- ◆ Students are required to download admit cards, verify centers of examinations, subjects etc. well before commencement.
- ◆ Students are required to carry sealed water bottle (Poly pouch/ packet is not allowed) to the examination hall.
- ◆ All PG/MBA/OTHER EXAMINATION under CBCS have two components - (university/ Internal)- appearance and passing in both components is a requirement . Appearance at only one part would automatically lead to failure.
- ◆ Failed candidates are required to attend both assignment test and university exam.

- ◆ If any examinee will found misbehaving the invigilator then serious action will be taken against him/her.
- ◆ If a student refuses to sign the Mal Practice form then the Center Superintendent can also book the candidate.
- ◆ Visit www.ddceutkal.ac.in for Examination schedules.
- ◆ In case of Malpractice, the decision is taken by the appropriate committees of the university. A candidate may reappear at the subsequent examination with an undertaking.
- ◆ In case of non availability of marks or being marked absent in spite of presence, Candidate is required to obtain attendance and memo copies. Further such candidates are to fill up form for re-appearance pending location of marks.

I have read the above, understood the content and I agree.

Name: _____

Course: _____

Enrollment No: _____





Satyam Param Dhimalai

Utkal University Vanivihar

Bhubaneswar-751 004
website : www.utkaluniversity.org

2015

January						
Su	Mo	Tu	We	Th	Fr	Sa
		1	2	3		
4	5	6	7	8	9	10
11	12	13	14	15	16	17
18	19	20	21	22	23	24
25	26	27	28	29	30	31

February						
Su	Mo	Tu	We	Th	Fr	Sa
1	2	3	4	5	6	7
8	9	10	11	12	13	14
15	16	17	18	19	20	21
22	23	24	25	26	27	28

March						
Su	Mo	Tu	We	Th	Fr	Sa
1	2	3	4	5	6	7
8	9	10	11	12	13	14
15	16	17	18	19	20	21
22	23	24	25	26	27	28
29	30	31				

April						
Su	Mo	Tu	We	Th	Fr	Sa
			1	2	3	4
5	6	7	8	9	10	11
12	13	14	15	16	17	18
19	20	21	22	23	24	25
26	27	28	29	30		

May						
Su	Mo	Tu	We	Th	Fr	Sa
31			1	2		
3	4	5	6	7	8	9
10	11	12	13	14	15	16
17	18	19	20	21	22	23
24	25	26	27	28	29	30

June						
Su	Mo	Tu	We	Th	Fr	Sa
1	2	3	4	5	6	
7	8	9	10	11	12	13
14	15	16	17	18	19	20
21	22	23	24	25	26	27
28	29	30				

July						
Su	Mo	Tu	We	Th	Fr	Sa
			1	2	3	4
5	6	7	8	9	10	11
12	13	14	15	16	17	18
19	20	21	22	23	24	25
26	27	28	29	30	31	

August						
Su	Mo	Tu	We	Th	Fr	Sa
30	31					1
2	3	4	5	6	7	8
9	10	11	12	13	14	15
16	17	18	19	20	21	22
23	24	25	26	27	28	29

September						
Su	Mo	Tu	We	Th	Fr	Sa
	1	2	3	4	5	
6	7	8	9	10	11	12
13	14	15	16	17	18	19
20	21	22	23	24	25	26
27	28	29	30			

October						
Su	Mo	Tu	We	Th	Fr	Sa
			1	2	3	
4	5	6	7	8	9	10
11	12	13	14	15	16	17
18	19	20	21	22	23	24
25	26	27	28	29	30	31

November						
Su	Mo	Tu	We	Th	Fr	Sa
1	2	3	4	5	6	7
8	9	10	11	12	13	14
15	16	17	18	19	20	21
22	23	24	25	26	27	28
29	30					

December						
Su	Mo	Tu	We	Th	Fr	Sa
		1	2	3	4	5
6	7	8	9	10	11	12
13	14	15	16	17	18	19
20	21	22	23	24	25	26
27	28	29	30	31		

Holiday List

01.01.2015 - New Years Day, 14.01.2015 - Makar Sankranti/Pongal, 23.01.2015-Subash Bose Jayanti/Veer Surendrasai Jayanti, 24.01.2015-Basanta Panchami / Saraswati Puja, 26.01.2015-Republic Day, 17.02.2015-Maha Shivaratri, 05.03.2015- Panchayatiraj Divas/Dola Purnima, 06.03.2015-Holi, 28.03.2015-Sri Ram Navami, 01.04.2015-Utkal Dibbas, 03.04.2015-Good Friday, 14.04.2015-Maha Visubha Sankranti/Dr. B.R. Ambedkar Jayanti, 21.04.2015- Akshayatriya, 15.06.2015-Rajasankranti, 16.06.2015-Bhudad, 18.07.2015-Rathayatra/Id-ul-fitre, 15.08.2015-Independence Day, 05.09.2015-Janmastami, 17.09.2015-Ganesh Puja, 18.09.2015-Nuakhai, 24.09.2015-Id-Ul-Zuha, 02.10.2015-Gandhi Jayanti, 12.10.2015-Mahalaya, 20.10.2015 to 23.10.2015 - Durga Puja, 24.10.2015-Moharram, 27.10.2015-Kumarpujima/Mahalaxmi Puja, 10.11.2015-Kali Puja, 11.11.2015-Diwali, 24.11.2015-Bada Osha, 25.11.2015-Rasha Purnima, 27.11.2015- University Foundation Day, 03.12.2015-Prathamastami, 25.12.2015-X-Masday

TENTATIVE HOLIDAY LIST FOR 2016

Day	Date	Holiday
Saturday	January 23	Netaji Subhas Chandra Bose Jayanti
Tuesday	January 26	Republic Day
Saturday	February 13	Vasant Panchami
Friday	February 26	Maha Shivratri
Wednesday	March 23	Doljatra
Wednesday	March 23	Holi
Friday	March 25	Good Friday
Friday	April 01	Odisha Day
Thursday	April 14	Dr Ambedkar Jayanti
Friday	April 15	Ram Navami
Tuesday	June 14	Raja Sankranti
Tuesday	July 05	Idul Fitr
Monday	August 15	Independence Day
Thursday	August 25	Janmashtami
Saturday	August 27	Ganesh Chaturthi
Sunday	August 28	Nuakhai
Sunday	September 11	Idul Juha
Friday	September 30	Mahalaya
Sunday	October 02	Mahatma Gandhi Birthday
Sunday	October 09	Saptami of Durgapuja
Tuesday	October 11	Mahanavami
Wednesday	October 12	Muharram (10th Day)
		Vijaya Dashami
		Durga Puja
Sunday	October 30	Deewali
Monday	October 31	Lakshmi Puja
Monday	November 14	Rasa Purnima
Monday	December 12	Milad-un-Nabi